



# LIMPOPO

PROVINCIAL GOVERNMENT  
REPUBLIC OF SOUTH AFRICA

## PROVINCIAL LEGACY PROJECTS AND IMPLEMENTATION TIMELINES

**NATIONAL COUNCIL OF PROVINCES:  
THREE-SPHERE PLANNING SESSION**

**29 – 30 MARCH 2023 2023**



***The heartland of southern Africa - development is about people***



# PRESENTATION OUTLINE

---

- PURPOSE
- INTRODUCTION
- LIMPOPO DEVELOPMENT PLAN PERFORMANCE OVERVIEW
- KEY PROVINCIAL PRIORITIES
- CONCLUSION



# PURPOSE



To provide an overview of Provincial Legacy Projects and Implementation Timelines:

- ❑ Key provincial priorities delineated for accelerated implementation during the last 12 months of the sixth dispensation;
- ❑ Highlight key development projects for accelerated implementation across all clusters; and
- ❑ Provide implementation timelines for priority projects across all clusters, including their spatial reach and impact across districts and localities



# INTRODUCTION

- The province developed the **LDP 2020-2025** aligned to the NDP vision 2030, the MTSF 2019-2024 and other policies and regulatory frameworks.

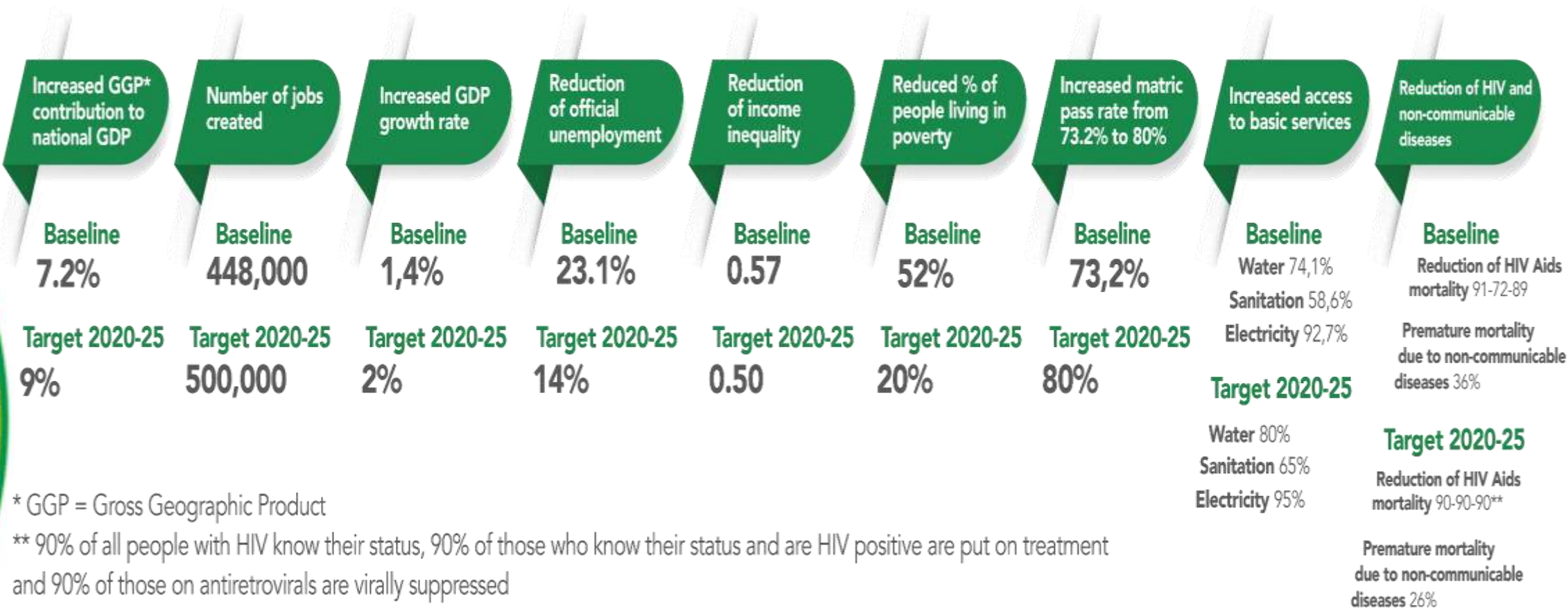
## **VISION:**

To drive a vision of a resilient, vibrant and prosperous province inspired by its diverse and creative people and its environment



# HIGH-LEVEL PRIORITY TARGETS OF THE LDP 2020-2025

## TARGETS



\* GGP = Gross Geographic Product

\*\* 90% of all people with HIV know their status, 90% of those who know their status and are HIV positive are put on treatment and 90% of those on antiretrovirals are virally suppressed



# PROGRESS ON LDP TARGETS

Indicator	Baseline	Target	Progress
Increased contribution to GDP	7.2%	9%	(7.0%: 2021 Estimates)
Number of jobs created	448 000	500 000	90 000
Increased GDP growth rate	1.4%	2%	1.6 % (Q3:2022)
Reduction of official unemployment	23.1%	14%	31% (Q3:2022)
Reduction of income inequality	0.57	0.5	0.6
Reduced % of people living in poverty	52%	20%	59 % (SERO, Socio Economic Review and Overview, 2022)
Increased matric pass rate from 73.2 to 80%	73.2%	80%	72.1% (2022)
Increased access to basic services			
Water,	74.1	80	69.4%
Electricity	97.2	95	97.2%
Sanitation	58.6	65	58.7%
Reduction of HIV and non communicable diseases	91-72-89	90-90-90	Total population: 90-65-89
Premature mortality	36%	26%	



# **PRIORITY AREAS FOR 2023/24FY**

# ECONOMIC CLUSTER

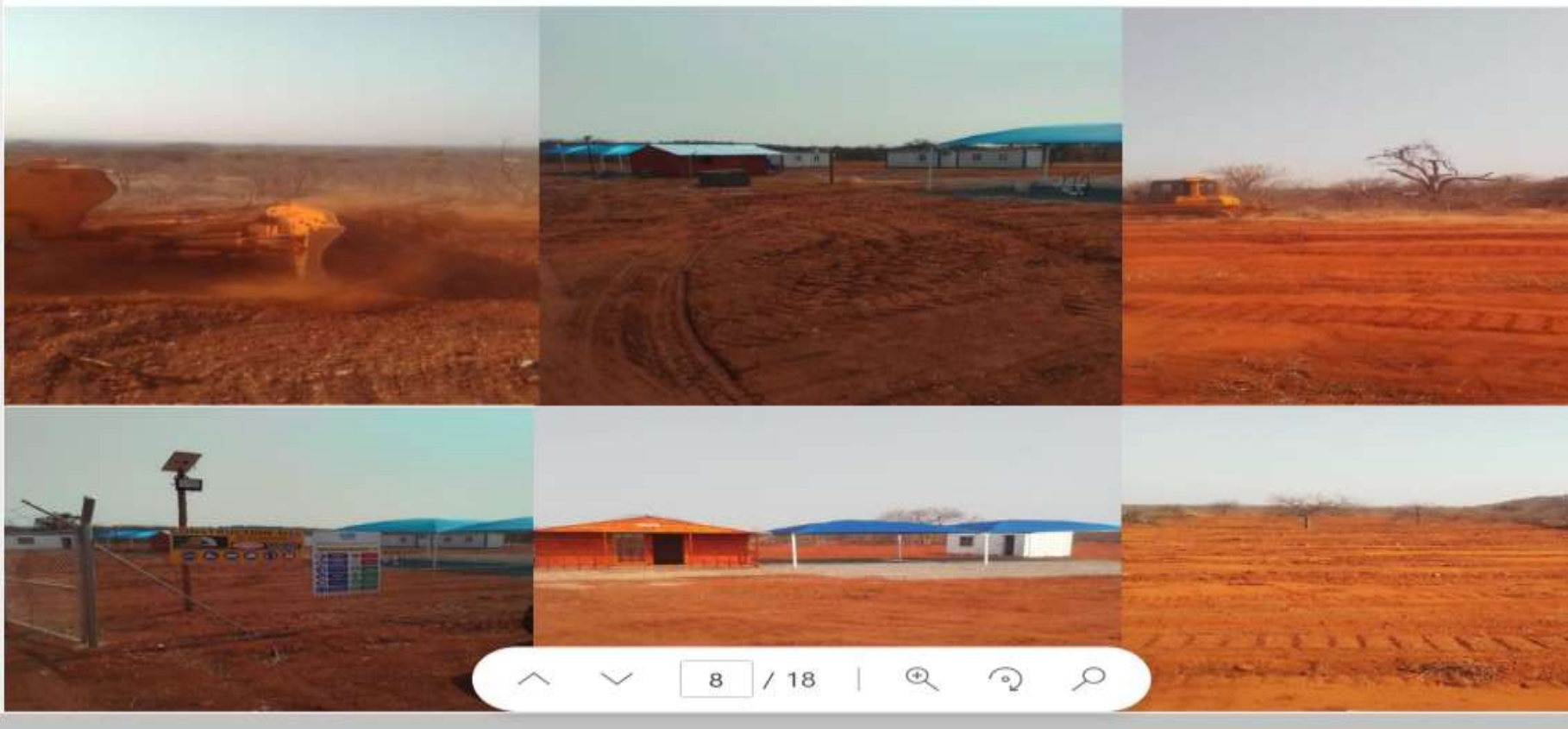
## Cluster Key Focus Areas in 2023/24:

- ❑ Leverage on our comparative advantages to advance towards rapid **industrialization** through implementation of the Industrial Master Plan and catalytic economic projects.
- ❑ Forge strategic partnerships with the private sector, national SoEs and Neighbouring States to “leap-frog” industrialisation.
  - ❑ Clearly defined roles and responsibilities for social partners and a tracking system for progress
- ❑ Strengthen the implementation of **Musina-Makhado SEZ**
- ❑ Implementation of the **Fetakgomo/Tubatse Industrial Hub**





## North Site Activities



- ❖ Roads and Storm Water Infrastructure projects,
- ❖ WWT Treatment Plant,
- ❖ WWT Bulk line
- ❖ Water pipeline/reticulation
- ❖ Electricity long-lead materials
- ❖ Construction of 10MVA electricity substation



- Phase 1a:** Integrate & *expand* the 36ha industrial park (MISP). Nine (9) hectares earmarked for 2 factories to be constructed 2023/24 and 6 factories to follow & locate 8 investors
- 
- Phase 1b:** Construct perimeter fence and clear 75 ha site during 2023/24, set up bulk infrastructure and designs
- Anchor investors: Light & medium manufacturing:** Machinery & equipment manufacturing suppliers, green energy manufacturing, agribusiness and green vehicle components cluster.



# Catalytic Initiatives

projects with potential economic & job creation benefits

Musina-Makhado SEZ

Fetakgomo-Tubatse SEZ and Industrial Hub

Industrial Parks (Seshego)

Industrial Parks (Nkowankowa)

Industrial Parks (Thohoyandou)

Value of the Project:

R150 billion

R25 billion

R40 million

R35 million

R139.5M

ESTIMATED JOBS

Over 21 700

8 000

3 737

1 262

1 000

# ECONOMIC CLUSTER cont..

---

## Cluster Key Focus Areas in 2023/24:

### **Increase Agricultural Production:**

- Implement Turnaround Strategy on improving Agricultural production as vital and viable sector of the provincial economy
- Implement Agro-processing Strategy
- Revive Agri-parks initiatives**
- Intensify implementation Farmer Support Programme**
- Intensify youth participation in agribusinesses and agro-processing programmes



# ECONOMIC CLUSTER Cont..

**AGRICULTURAL PRODUCTION, INCLUDING AGRO-PROCESSING INITIATIVES**

PROJECT NAME	ESTIMATED TOTAL PROJECT COST	ESTIMATED JOBS
<b>Fruit Industry</b>		
Macadamia development	R380 million	1 500
Zebediela Citrus	R200 million	350
Limburg citrus	R150 million	270
Avocado development	R230 million	1 100
Boskop Citrus	R160 million	550



LIMPOPO

PROVINCIAL GOVERNMENT  
REPUBLIC OF SOUTH AFRICA

# ECONOMIC CLUSTER Cont..

**AGRICULTURAL PRODUCTION, INCLUDING AGRO-PROCESSING INITIATIVES**

## Vegetables

- ❑ 500ha potato development linked with Tala Foods.
- ❑ 2500ha tomato production linked to Norjax processing.

## Field crops

- ❑ 750ha cotton production to broaden Black producer participation.
- ❑ 1000ha soybean production through grower partnership.



# ECONOMIC CLUSTER Cont..

**FOURTH INDUSTRIAL  
REVOLUTION INITIATIVES**

PROJECT NAME	ESTIMATED TOTAL PROJECT COST	ESTIMATED JOBS
Limpopo Science and Technology Park	R4.7bn at the end of year 2025	10,000 jobs at the end of year 2025
Limpopo Broadband Network	R2.3bn	Direct jobs: 3,200 Indirect jobs: 1,400 Induced jobs: 7,000
Business Process Outsourcing & Off-Shoring (BPO&O) – Contact Centre: Planning for the establishment of the BPO&O facility	R 20 mil	2100
Digital Virtual Incubator for Entrepreneurs	R 10 mil	3000



# ECONOMIC CLUSTER Cont..

---

- **LOCAL MANUFACTURING**
- Local Manufacturing of windows, doors, door frames, wire, wood products, implements & equipment, waste recycling products.
- Value add is estimated to be over **R1.6 billion**.





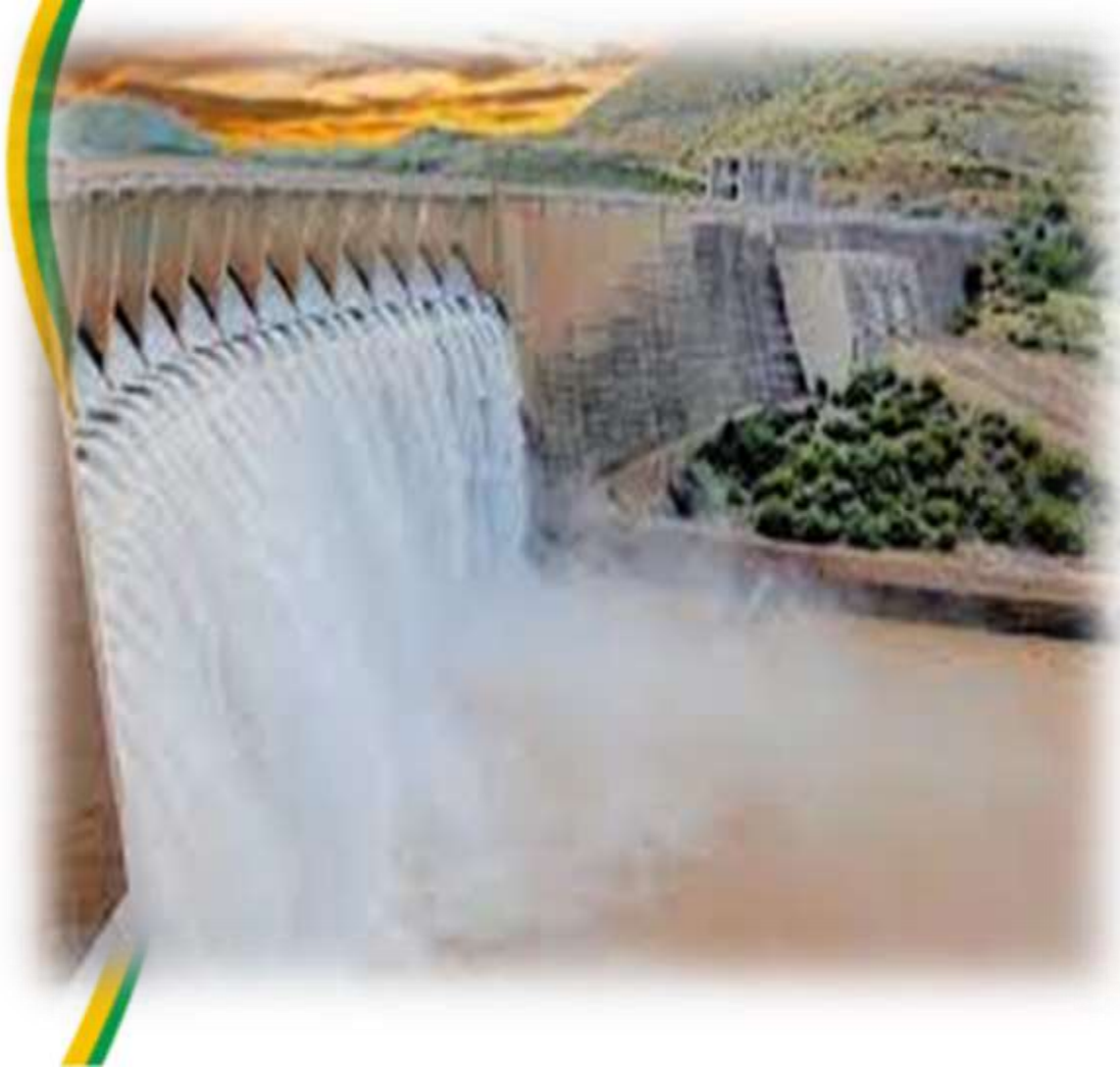
# INFRASTRUCTURE CLUSTER

## Cluster Key Focus Areas in 2023/24:

- Delivery of infrastructure which plays a catalytic role in the comparative advantages of the province (Mining , Agriculture & Tourism) and Priority Growth Points areas.
- Provision of water and sanitation infrastructure including school sanitation (Eradication of pit latrines in schools)
- Improve water supply reliability to support socio-economic development
- Integrated road and transport networks
- Development of Sustainable Integrated Human Settlement including the upgrading of informal settlements.
- Alignment of national, provincial and local government infrastructure planning, resource allocation and delivery.
- Capacity building for infrastructure delivery and project management.
- Implement SMME empowerment programme (empowering local contractors and local labourers)



# WATER AND SANITATION INFRASTRUCTURE cont..



- ❑ Mokolo and Crocodile River Water Augmentation Project - Phase 2A.
- ❑ Olifants River water resources Development (ORWRP) Focus on Phase 2B, 2H, 2F, & southern extension of the Lebalelo line.
- ❑ Loskop Regional Bulk Cross-boundary Scheme Project to benefit communities of Elias Motsoaledi.
- ❑ Construction of Nwamitwa Dam to support development in Mopani District.
- ❑ Raising of the full supply level of Tzaneen Dam wall.
- ❑ Musina Dam - Water provision to Musina SEZ.



## WATER AND SANITATION INFRASTRUCTURE cont..



- ❑ Bulk Water Infrastructure - Mogalakwena LM to Lephalale and Thabazimbi local municipalities.
- ❑ Upgrade Nandoni Water Treatment works from 60m/l per day to 120 ml per day.
- ❑ Ebenezer Olifants ( Polokwane Water Treatment Plant).
- ❑ Polokwane RWWTW.
  
- ❑ Pipeline from Valdesia to Mailaskop – Augmentation from Nandoni Dam.
- ❑ Upgrading of Ritavi 2 sub-scheme 4 (support Nkowankowa industrial park and proposed new townships).
- ❑ Mooihoek BWS phase 4
- ❑ Mogalakwena BWS phase 2 to be completed by March 2024



# ROAD INFRASTRUCTURE

NAME OF THE PROJECT	LOCATION	DISTRICT	KEY PARTNERS
Upgrade N11 from Loskop to Grobler Bridge Border post		Sekhukhune to Waterberg Districts	<ul style="list-style-type: none"><li>DPWRI</li><li>PEGAC Integrated Infrastructure Development TWG</li><li>SANRAL</li></ul>
Upgrade of R555 from stofberg to Burgersfort	FetakgomoTubatse Municipality	Sekhukhune District	<ul style="list-style-type: none"><li>DPWRI</li><li>PEGAC Integrated Infrastructure Development TWG</li></ul>
Upgrade N1 from Belabela to Beit Bridge Border Post	FetakgomoTubatse Municipality	Waterberg District	<ul style="list-style-type: none"><li>DPWRI</li><li>PEGAC Integrated Infrastructure Development TWG</li></ul>



# Cont..

PROJECT NAME	LOCATION	DISTRICT	KEY PARTNERS
D1200 Rehabilitation project	Senwabarwana CBD	Capricorn District	<ul style="list-style-type: none"><li>▪ Capricorn District</li><li>▪ Blouberg municipality</li><li>▪</li></ul>
Tarring of Orrie Baragwanath Pass (Spatial and regional integration and connectivity tourism route)	Mafefe to Ofcalaco	Capricorn District	<ul style="list-style-type: none"><li>▪ Capricorn District</li><li>▪ Lepelle-Nkumpi Municipality</li></ul>
Revitalization of the existing Railway line – linking the municipalities to Musina	Musina Municipality	Vhembe District Municipality	<ul style="list-style-type: none"><li>▪ Vhembe district Municipality</li><li>▪ Musina Municipality</li><li>▪ DCS</li></ul>



# Cont..

PROJECT NAME	LOCATION	DISTRICT	KEY PARTNERS
Road to Rail Infrastructure Development	All municipalities: Modimolle- Mookgopong, Lephalale, Mogalakwena, Thabazimbi,	Waterberg District	<ul style="list-style-type: none"><li>Waterberg District</li><li>DPWRI</li><li>RAL</li><li>Transnet</li><li>Public Enterprise</li><li>Road Agency</li></ul>
Transit Oriented Development (TOD)	Polokwane Municipality	Capricorn District	<ul style="list-style-type: none"><li>Capricorn District</li><li>Polokwane Municipality</li></ul>
Thoyandou Multimodal Hub	Thulamela Municipality	Vhembe District	<ul style="list-style-type: none"><li>Vhembe District</li><li>Thualmela Municipality</li><li>DTCS</li></ul>



# INTEGRATED HUMAN SETTLEMENT

NAME OF THE PROJECT	LOCATION	DISTRICT	KEY PARTNERS
Northam Integrated Human Settlement Project	Thabazimbi Municipality	Waterberg District	<ul style="list-style-type: none"><li>▪ COGHSTA</li><li>▪ PEGAC Integrated Infrastructure Development TWG</li></ul>
Lephalale Integrated Human Settlement Project	Lephalale Municipality	Waterberg District	<ul style="list-style-type: none"><li>▪ COGHSTA</li><li>▪ PEGAC Integrated Infrastructure Development TWG</li></ul>
Burgersfort Integrated Human Settlement Projects	FetakgomoTubatse Municipality	Sekhukhune District	<ul style="list-style-type: none"><li>▪ COGHSTA</li><li>▪ PEGAC Integrated Infrastructure Development TWG</li></ul>



# Cont..

PROJECT NAME	LOCATION	DISTRICT	KEY PARTNERS
Polokwane Mixed Housing Development (leased properties)	Polokwane Municipality	Capricorn District	<ul style="list-style-type: none"> <li>Capricorn District</li> <li>Polokwane Municipality</li> <li>COGHSTA</li> <li>TWG</li> </ul>
Mixed housing (Social, Gap and Student housing) (Municipal entity)	Polokwane Municipality	Capricorn District	<ul style="list-style-type: none"> <li>Capricorn District</li> <li>Polokwane Municipality</li> <li>COGHSTA</li> </ul>
Urban renewal projects in the CBD - Mixed housing around Buite and Bok Streets (Municipal)	Polokwane Municipality	Capricorn District	<ul style="list-style-type: none"> <li>Capricorn District</li> <li>Polokwane Municipality</li> <li>COGHSTA</li> </ul>





# Sports, Arts & Culture

PROJECT NAME	LOCATION	DISTRICT	KEY PARTNERS
Limpopo State Theatre	Polokwane Municipality	Capricorn District	<ul style="list-style-type: none"><li>▪ Capricorn District</li><li>▪ Polokwane Municipality</li><li>▪ DPWRI</li><li>▪ DSAC</li></ul>



# STRATEGIC INTERVENTION

---

- ❑ We are in a position to gain from **resource endowment**, but only if we transform our economy from resource base to **industrialization** through value addition, **however**,
  - ❑ Protracted Bulk Water Infrastructure derails industrialization.
  - ❑ Delay in designation of Fetakgomo–Tubatse as a Special Economic Zone.
  - ❑ Lack of funding for to implement major catalytic projects in the province.



# STRATEGIC INTERVENTIONS

## ❑ Expedited the finalization of Bulk Water Projects, including

- ❑ Construction of **Nwamitwa Dam** to support development in Mopani District,
- ❑ Raising of the full supply level of **Tzaneen Dam** wall to address water shortages in Tzaneen and surrounding areas,
- ❑ **Olifants River Water Resource Management Model(OMM)** to support communities and mines in Sekhukhune and Mogalakwena in Limpopo by 2030,
- ❑ **Upgrade of Nandoni** Water Treatment Works,
- ❑ **Transfer of Water From Zimbabwe** to support Musina and MMSEZ

- ❑ Fetakgomo-Tubatse Business Plan is ready for submission to Department of Trade, Industry and Competition as requirement for designation as an SEZ.
- ❑ Engage various stakeholders for funding of major catalytic projects.
- ❑ Development of the Limpopo Renewable Energy Strategy to respond to the current energy transition and electricity challenges.

# CONCLUSION

**“I think the time has come for us to consider, in the light of our experiences at this day at home, whether the methods which we have applied so far are adequate.”**

**By Nelson Mandela**

LAST FY OF THE  
6<sup>TH</sup>  
ADMINSTRATION

7 YEARS  
COUNT  
DOWN TO  
2030



- **Ke a leboga**
- **Ha khensa**
- **Baie dankie**
- **Ndo livhuwa**
- **Thank you!!**