



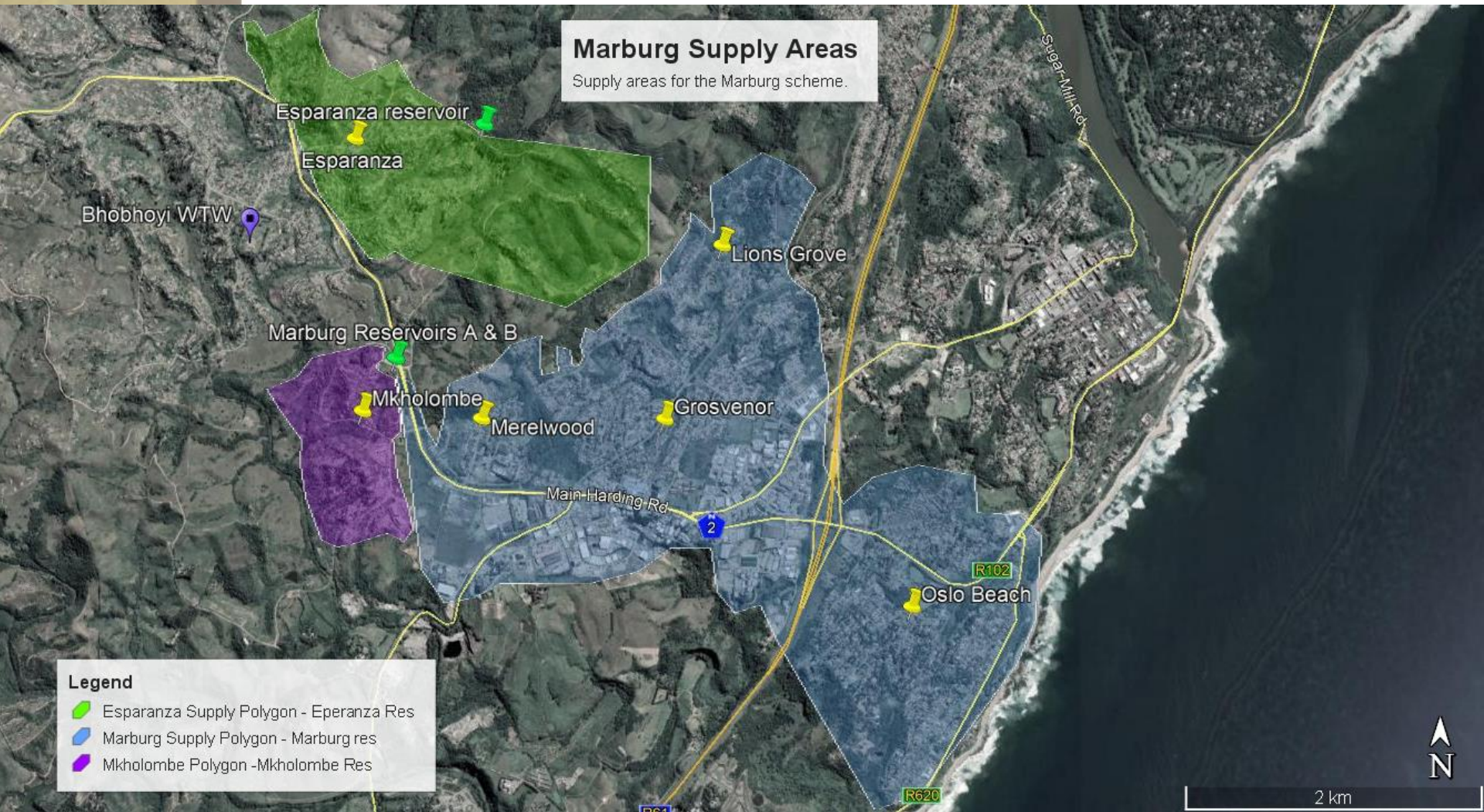
Ugu District Municipality

Marburg Pipeline Replacement



15 November 2022

PROJECT AREA:



PROJECT STAKEHOLDERS

- **Main Consultant:** JTN Consulting
- **Environmental Sub-Consultant:** Wallace & Green Environmental Consulting
- **Health & Safety Sub-Consultant:** KNR Safety Consultants (PTY) LTD
- **Implementing Contractor:** Zuzilemtho Civil Engineering
- **Implementation Duration:** March 2022 – October 2022 (08 Months for Implementation)
- **Project Cost:** R8 145 895,00 (All inclusive)
- **Material Supply Service Provider:** Water & Sanitation Engineering Contractors (WASEC)
- **Material Supply Duration:** Sept. 2021 – Nov. 2021 (03 Months for Material Supply)
- **Material Supply Cost:** R21 356 820,83 (All inclusive)
- **Local Social Facilitator:** Themba Zondi
- **Total Project Cost:** **R29 502 715,83 (All inclusive)**
- **Local Employment:** Twenty (20) local labour to be employed
- **Local Sub-Contractor:** Macla Fuze Development
- ***Notes:**
 1. *The project is split into two due to high material content and high financial input up front,*
 2. *For local businesses to participate meaningfully in the project as they will struggle to access funds to procure material, and*
 3. *There is accountability by materials contractor should there be material failure*

PROJECT BACKGROUND

- The Marburg water supply scheme was identified by the Ugu District Municipality's Water Services Department as part of the projects under the Non-Revenue Water (NRW) program.
- The Marburg water supply system has been affected by numerous pipeline failures due to the old and fragile existing 200mm diameter Asbestos Cement (AC) rising main, from Bhubhoyi WTW to the Marburg reservoirs.
- The main objective of the pipeline replacement is to stabilize the water supply system and address long term complaints.
- Which is the replacement of the existing 1.7 km, 200mm Dia. Asbestos Cement (AC) pipe with 1.7 km of 450mm Dia. steel Pipeline (Bhubhoyi WTW to Marburg Reservoir)
- An upgrade to the existing Marburg scheme is also necessitated by the shortage of adequate water supply due to the increased population numbers and increase in water demand.
- The current source of water is the Bhubhoyi WTW and has sufficient capacity.

PROJECT DEMOGRAPHICS

Village name	Current Population
A - Esparanza	5 203
B - Grosvenor	4 144
C - Lions Grove	2 300
D - Merelwood & Mkholombe	7 069
E - Oslo Beach	3 086
F - Jesus location	864
G - Commercial/Industrial HUB	156
Total:	22 822

Table 1 : Marburg Water Supply Demographics

MARBURG SCHEME PROPOSED ROUTE

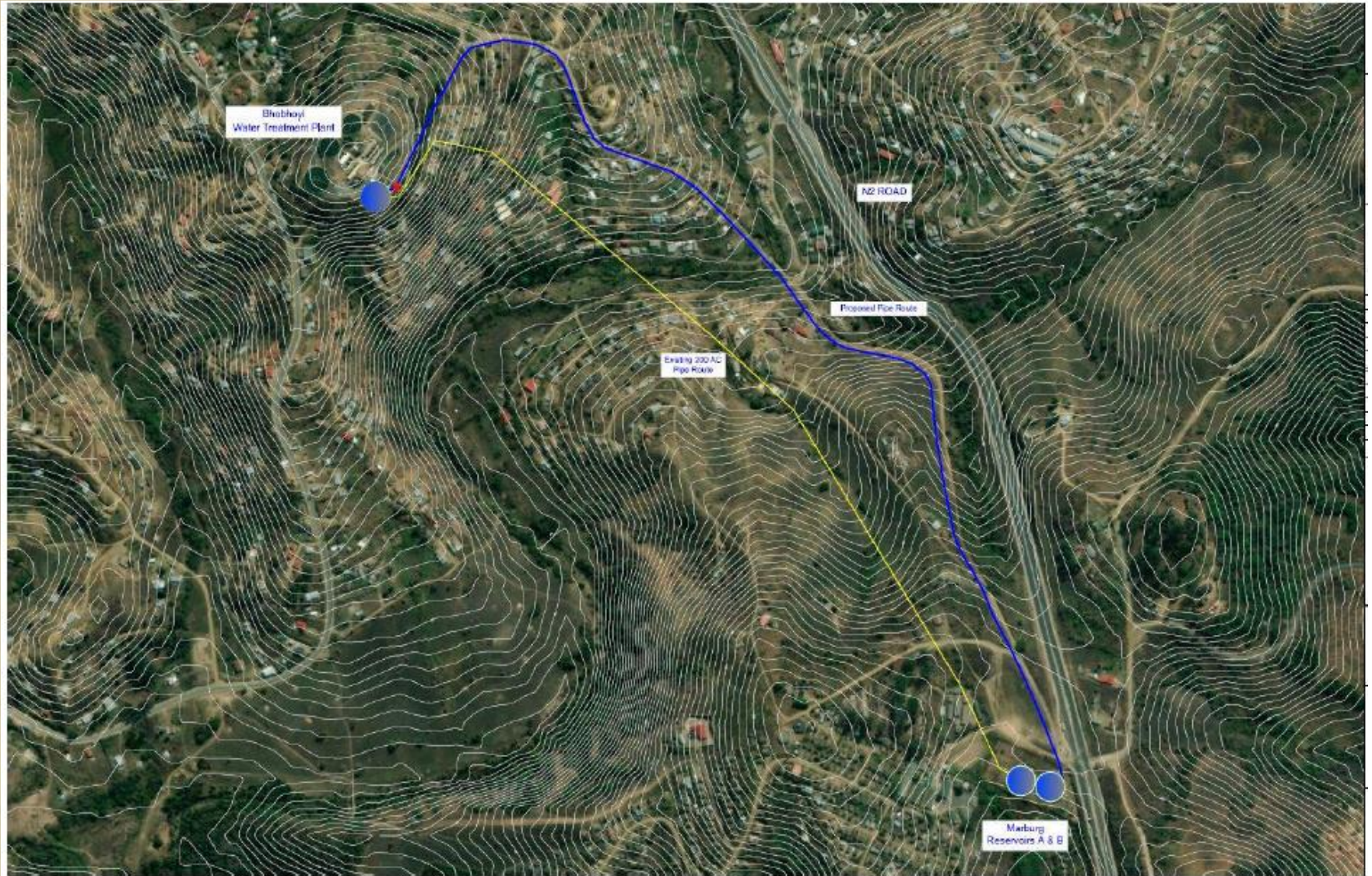


Figure 4: Marburg Scheme Proposed General Layout

SITE PHOTOS





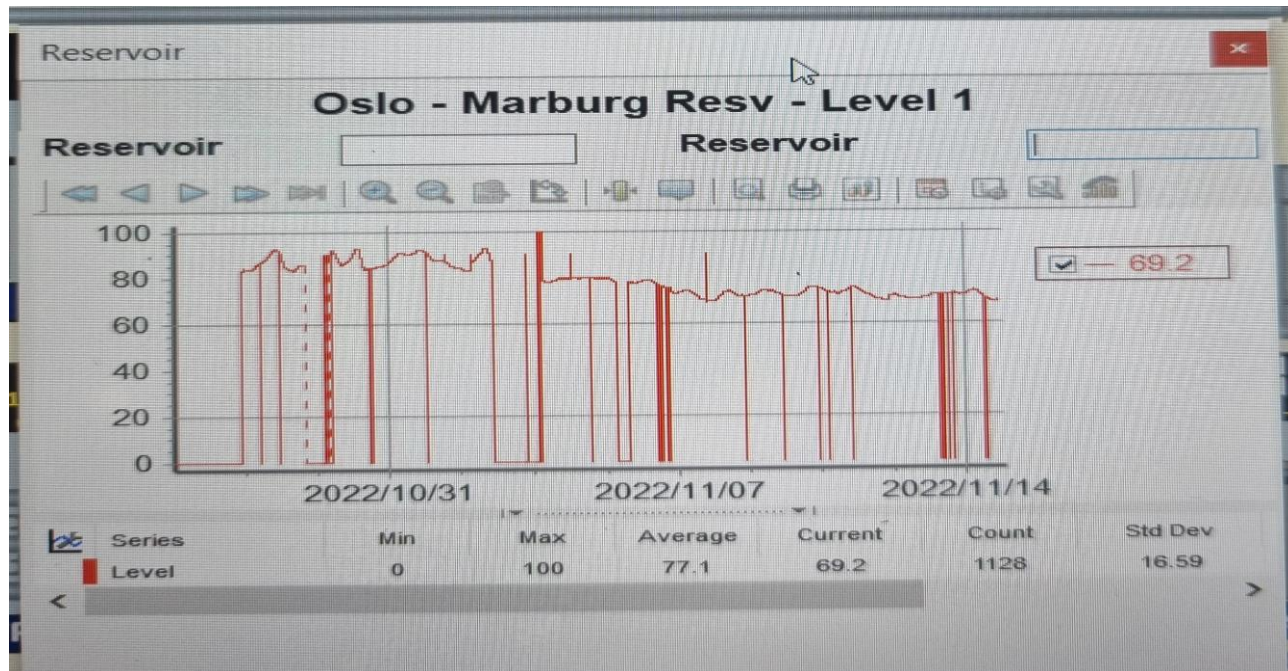




System Stability – SCADA Telemetry Trends

- There has been immediate stability on the system, with the reservoirs levels both trending well above 70% up to 85%.
- The both reservoirs has a storage of 2Ml each, they have never been filled up at the same time but the new pipeline, they are now both operating at optimal

System Stability – SCADA Telemetry Trends...continue





Thank You