

# NATIONAL COUNCIL OF PROVINCES HYBRID PROVINCIAL WEEK 26-30 OCTOBER 2020

Cllr. Lebohang Masoetsa  
Acting Executive Mayor  
29 October 2020

# Content

---

1

Introduction: Mangaung

2

Integrated Development Plan (IDP)

3

Service Delivery Plans

4

State of Municipal Infrastructure

5

Impact of S139 Intervention



**MANGAUNG**

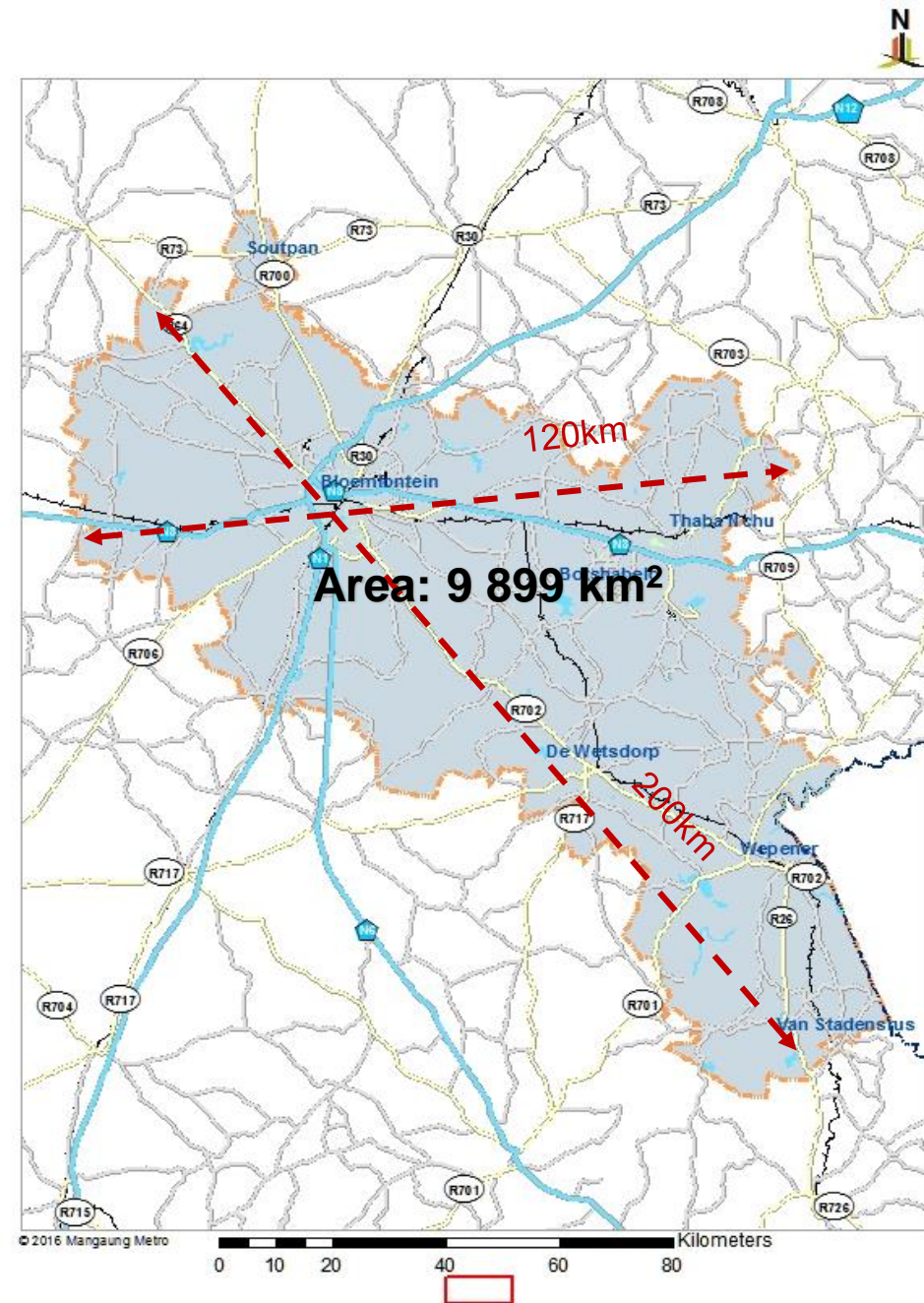
# Introduction



MANGAUNG

# Mangaung Metro Profile

- Established in 2000 as category B local municipality
- Elevated in April 2011 as category A metropolitan municipality
- The metro comprises Bloemfontein, Botshabelo, Thaba Nchu, smaller towns of Soutpan, Dewetsdorp, Wepener, Van Stadensrus and extensive rural areas
- Largest geographical area of all metros
- Low population density (78.3 people/km<sup>2</sup>)

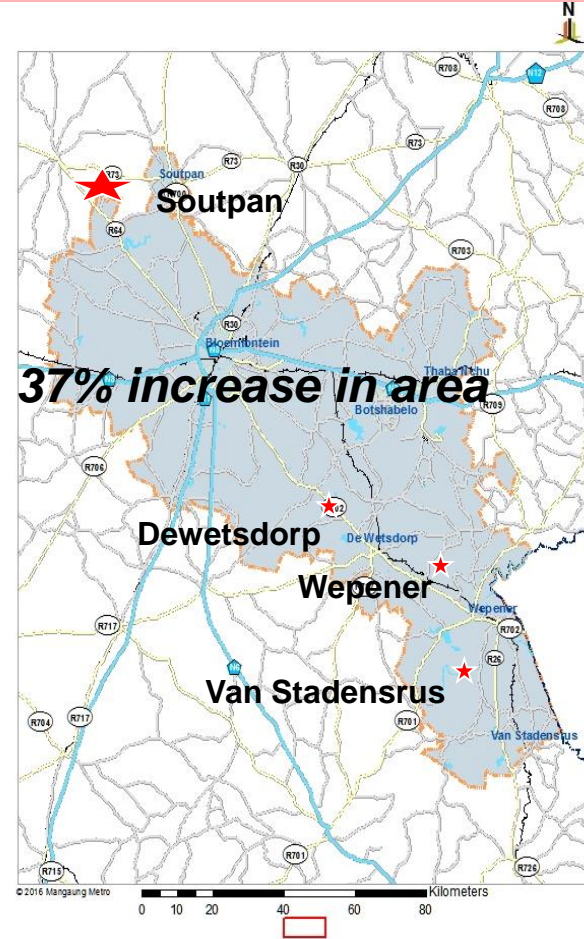
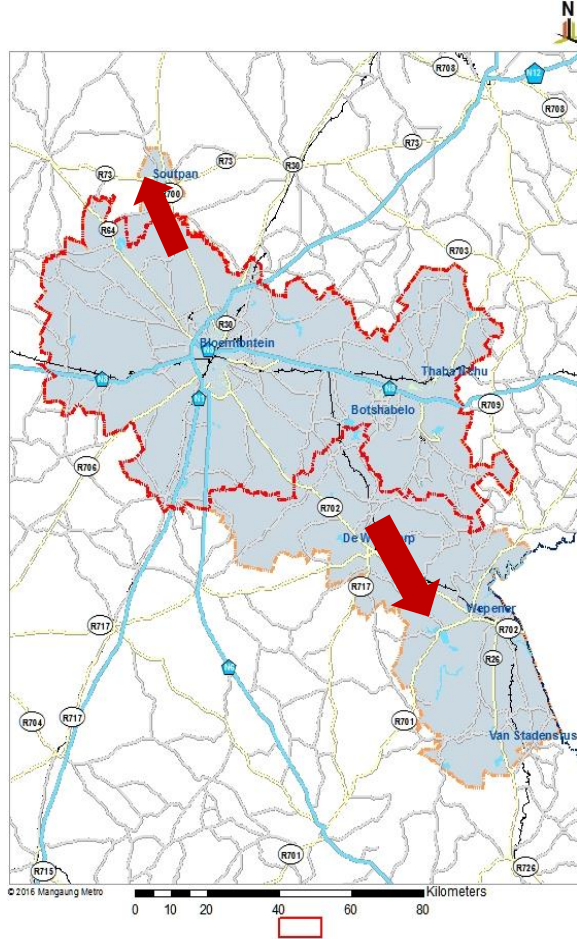
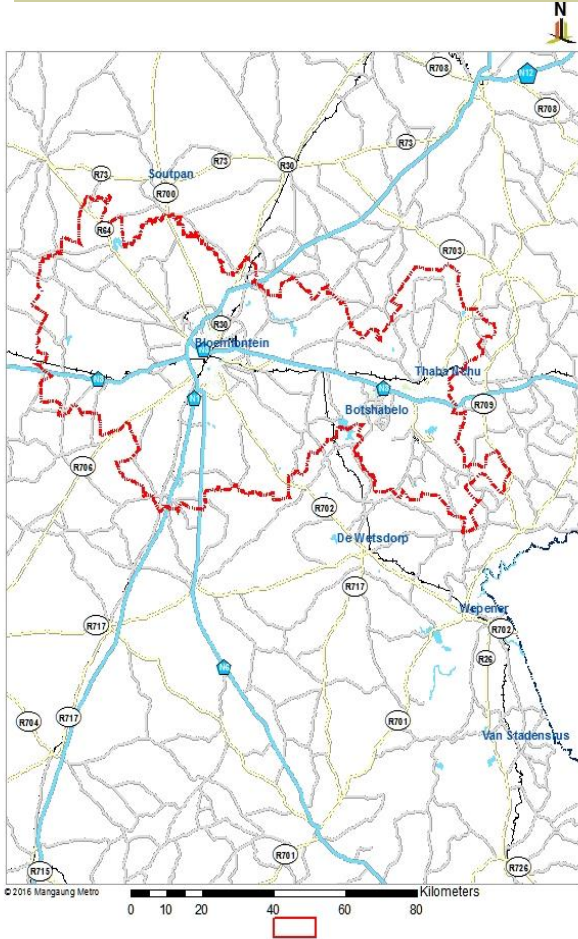


# Mangaung Metro Profile/2

Pre 2016  
Area - 6 284 km<sup>2</sup>  
Density -119 people/ km<sup>2</sup>

August 2016  
Re-demarcation

Post Aug 2016  
Area- 9 899  
Density - 78.3 people/ km<sup>2</sup>



# Integrated Development Plan



MANGAUNG

# IDP Strategic Objectives

## Spatial

Implement an integrated and targeted strategy that transforms the spatial and economic apartheid legacy of Mangaung

## Economic

Boost economic development in Mangaung by strengthening organisational performance

## Service delivery

Strengthen service delivery as a top priority for economic growth

## Financial

Implement a financial recovery plan that rebuilds financial strength

## Organisational

Strengthen the organisation  
– the heart of it all

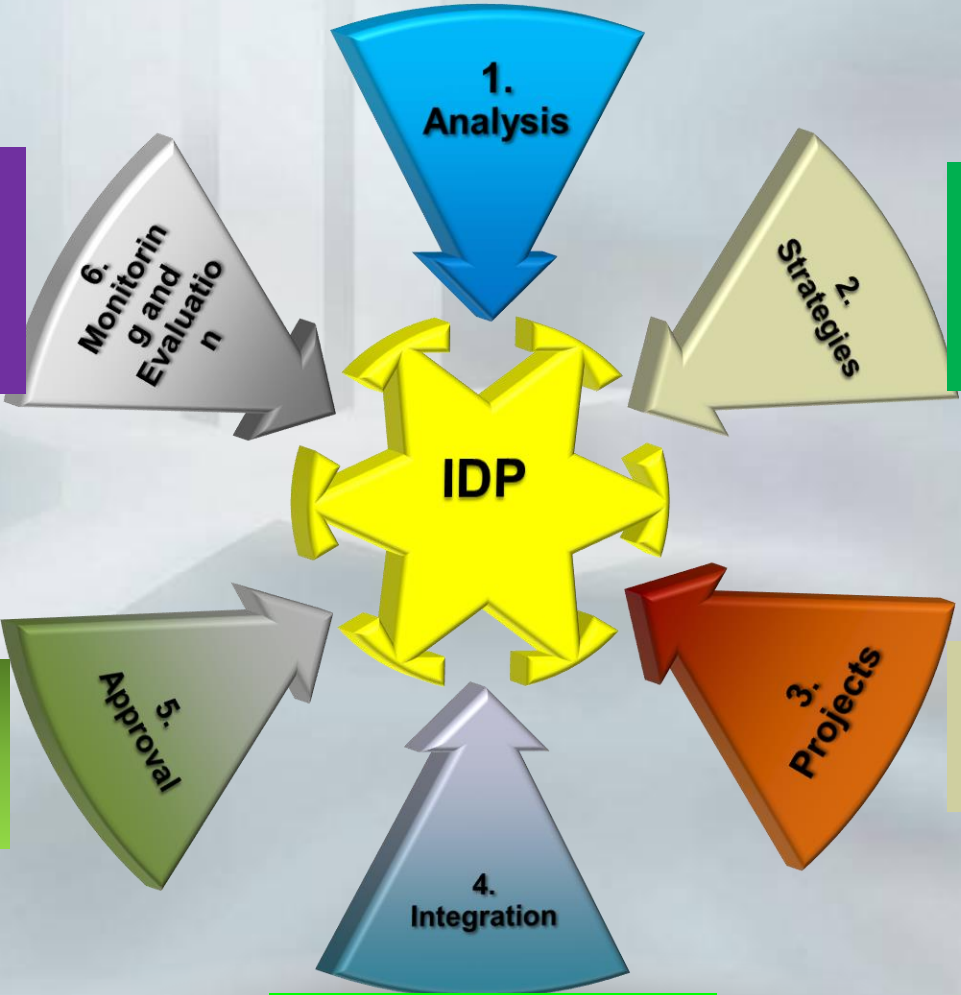


**MANGAUNG**

# IDP Review Process (Legal Compliance Process Undertaken)

Assessment of level of development  
Priority issues  
Resource availability

- Monthly Section 71 reports
- Quarterly SDBIPs
- Mid-term Report
- Annual Reports.



Vision and developmental objectives  
Strategies and project identification

Project details  
(Beneficiaries, funding, costs, duration etc)

Council consideration and approval

Integration of all plans and projects





# Service Delivery Plans



MANGAUNG

# Approved Projects 2020/21 SDBIP

The SDBIP for 2020/2021 has identified **231** projects/programmes that will be implemented by the municipality.

Departments	Number of Programmes/ Projects for Implementation in 2020/2021
Planning	13
Economic and Rural Development	3
Engineering Services	53
Fleet and Solid Waste Management	27
Centlec	4
Social Service	29
Finance	8
Human Settlement	32
Office of the City Manager	21
Corporate Services	40
Total Programmes / Projects	231

- Completion of Botshabelo Industrial Park Phase2
- Construction of Botshabelo ICT Digital Hub
- Completion of 108 Botshabelo Hawking Stalls
- Development of Thaba Nchu Micro Retail Park for SMMEs
- Upgrading of abattoir for Thaba Nchu Agri-Hub
- Design of piggeries for Thaba Nchu and BFN
- Fencing of farms completed in Thaba Nchu, Dewetdorp and Wepener
- Installation of windmills
- Completion of Urban Pocket Park
- Pedestrian walkaways completed
- Construction of Fan Mile and Bloemspruit Greening

- Identification of industrial land for investment opportunities
- Refurbishment of hawking stalls in BFN
- Permit issuance across the metro to trade legally and sought Covid-19 relief packages (SMMEs and hawkers)
- Demarcation of hawking sites
- Improvement on Naval Hill for tourist attraction
- Relocation of commonages to farms
- Removal of livestock in residential areas

# 2019/20 High Mast Lights Electrification

Town	Ward	Allocation per Ward	No of Masts	Progress	Estimated Cost
Mangaung	Ward 10	2	8	Complete and Energized	R3 600 000.00
	Ward 46	2			
	Ward 17	2			
	Ward 45	2			
Botshabelo	Ward 27	2	8	6 Complete, Two High Mast Lights Will Be Energized with Botshabelo R Electrification Program of 2020/21 Financial Year	R3,600 000.00
	Ward 28	1			
	Ward 32	1			
	Ward 35	2			
	Ward 37	2			
Thaba Nchu	Ward 42	1	7	4 Mast Complete and Energize, 3 X Mast Connections Outstanding From Eskom	R3,150,000.00
	Ward 43	3			
	Ward 41	3			

# 2019/20 Bulk Infrastructure Electrification

Town	Township Name	Number of Sites	Progress	Estimated Cost
Bloemfontein	Matlharantlheng	700	Mv And Lv Backbone Completed. Connections Outstanding	R12,110,000
Botshabelo	Block R	650	Mv And Lv Backbone Completed. Connections Outstanding	R11,245,000

# 2020/21 High Mast Lights Electrification

Town	Ward	Allocation Per Ward	No of Masts	Progress	Estimated Cost
Mangaung	Ward 46	1	6	Pegging And Excavations For 6 Mast Underway	R2,650,711.32
	Ward 45	1			
	Ward 10	2			
	Ward 7	2			
Botshabelo	Ward 38	1	2	Pegging	R 894,985.10
	Ward 28	1			
Naledi	Ward 50	1	2	Pegging	R 953,286.16
		1			

# 2020/21 Electrification Household Connections

Town	Township Name	Number of Sites	Progress	Estimated Cost
Bloemfontein	Matlharantlheng	1063	Design Complete	R18,389,900
Botshabelo	Block R	1063	Design Complete	R18,389,900
Botshabelo	Block L	435	Design Complete	R7,525,500
Botshabelo	Block H	204	Design Complete	R3,529,200
Dewetsdorp	Morojaneng	454	Design Complete	R7,854,200



# Key Water Projects

Project / Description	Approved Budget 2020/21	Physical Progress
Installation, refurbishment and upgrading of water supply systems: Automated meter reading and prepaid programme	R 16 117 585	Service Providers appointed
Bulk Supply, meters, location, replacement, calibration and installation of control meters	R 4 762 660	Service Providers appointed
Real loss reduction programme (water)	R 14 287 980	Contractors appointed
Replace water meters and metering of unmetered sites	R 23 079 930	193 more water meters were installed
Hamilton Park pump station refurbishment	R 4 762 660	Service Providers appointed
Pressure and network zone management (including auditing of valves and PRV commissioning)	R 13 335 448	Service Providers appointed
Maselspoort WTW Upgrading (Masselspoort filters)	R 9 525 320	Service Providers appointed

# Bulk Sanitation Infrastructure

TOWN	NAME OF WWTW	YEAR BUILT	CURRENT CAPACITY (ML)	CURRENT FLOW (ML)	PLANNED UPGRADE CAPACITY (ML)	TOTAL UPGRADED CAPACITY (ML)
Bloemfontein	Bloemspruit	1902	54	48	0	54
	Sterkwaters	2000	20	32	13	33
	Bainsvlei	2001	5	4	0	5
	North East	2013	15	12	30	45
	Bloem Industria	1991	0.9	0.7	0	0.9
	North	2010	6	3	0	6
	Welvaart	1985	6	4	0	6
Botshabelo		1988	20	17	20	40
Thaba Nchu		1984	6	4	12	18
Dewetsdorp		2002	2	1.7	0	2
Wepener		2013	0.7	0	0	0.7
Van Stadensrus		2010	1	0	0	1
Soutpan		1993	1	0	0	1
<b>TOTAL</b>			137.6	129.1	75	212.6

8 500 to 12 000 possible connections

**MANGAUNG**

# Bucket and VIPs Eradication Programme

- 58 014 sites to be provided with waterborne sanitation at the start of Phase 3.
- There were 26 308 Buckets/VIP's that were eradicated from 2009 – 2019.
- No. of Households connected from 1<sup>st</sup> July 2018 to 30<sup>th</sup> of June 2019 is 3186.
- The current backlog stands at **54 828** for formalised areas and requires R5.6 billion.
- There is an estimated backlogs of 2000 sites in Thaba Nchu Trusts (Rural Villages)
- The backlog has been increasing due to the formalisation of Informal Settlements and the amalgamation of Mangaung with Old Naledi Municipality and Soutpan which was part of Masilonyana Municipality.

# Key Sanitation Projects

Project / Description	Approved Budget 2020/21	Physical Progress
Sterkwater WWTW phase 3 mechanical and electrical	R 9 525 320	0.0%
Refurbishment of sewer systems	R 28 575 961	Ongoing
Extension Thaba Nchu WWTW (Selosesha) civil	R 28 575 961	5.0%
Waterborne sanitation and internal bulk services in Thaba Nchu	R 9 525 320	0.0%
Botshabelo Section K Pump station and rising main	R 12 859 182	SPs appointed
Botshabelo main outfall sewer	R 12 859 182	0.0%

# Key Road and Stormwater Projects

Project / Description	Approved Budget 2020/21	Physical Progress
Bot Rd 719 & 718	R 1 714 558	90,0%
T1428a Man Rd 198 199&200 Boch7 Days Upgrading	R7 620 256	3,0%
T1429b Man Rd 11548 Kagisanong Upgrading	R13 811 714	11,0%
T1523 Bot Rd 304 305 308 Section G Upgrading	R8 572 788	0,0%
T1524 Bot Rd 437 Section A Upgrading	R4 762 660	0,0%
Resealing of Streets	R14 492 169	90,0%
R 22 Taxi R Bloems Ph 3 4 6 & C Hani Upgrading	R4 762 660	98,0%
T1527a Bochabela Sts Upg	R7 620 256	37,8%
T1528 Man Rd 11388 & 11297 Jb Mafora Upgrading	R3 810 128	0,0%
T1530 Bot Rd B16 & 903 Section T Upgrading	R7 620 256	0,0%
T1534 Vereeniging Av Ext Bridge Over Rail	R38 101 281	0,0%
T1534b Vereeniging Avenue Ext Roads	R9 525 320	0,0%
Batho Upgrading Of Roads And Stormwater	R9 049 054	0,0%

# Development of Parks

Description	Budgeted amount-2019-2020	Amount spend by end June 2020	Progress
Park – Wepener	1,082,000	184,438	Site works were done, a fence was erected, and paving works has commenced. The project is at 80% completion.
Park – Soutpan	1 000 000	379,965	Site works were done, and the fencing of the park started. The project is at 10% completion.

The two sites were handed over to the appointed service providers on 17 and 19 February 2020. Implementation commenced and all operations were halted on 27 March 2020 due to the Covid-19 pandemic. Construction has since resumed

# Soutpan Park Development



MANGAUNG

# State of Municipal Infrastructure



MANGAUNG



# Maintenance Programme on Street and High Mast Lights

- Streetlights and High Masts are maintained mainly on a spot replacement basis
- Group replacement strategy is followed when maintaining high mast lights on main routes.
- On main route and on high mast lights all lamps are replaced when more than 30% of the lamps on a high mast have failed and the remaining lamps have reached 75% of their expected life.
- Other identified areas, like main through roads, the CBD, etc. are also handled on a group replacement basis.
- Centlec appointed 2 service providers to attend to daily complaints reported by the public.
- All high masts are maintained by an internal team.
- A maintenance schedule has been developed where all areas are maintained on a weekly basis.
- Preventative maintenance on lines and cables are done on a “Time-based” bases
- 95% of all maintenance is done in-house as personnel are trained and dispose over the necessary skills and experience, with specialized ad hoc maintenance being outsourced.

# Road Infrastructure Networks

- There are 3831 km of road in Mangaung
- Roughly 85% of these roads are Class 5 roads (access roads) with approximately 10% being Class 4 (collectors)

Municipality	Road Class					Grand Total
	National	Arterial	Distributor	Collector	Access	
Bloemfontein	30.2	29.6	182.6	194.2	1402.9	1839.5
Botshabelo	0.0	0.0	15.5	105.4	535.7	656.6
Dewetsdorp	0.0	0.0	0.0	10.6	42.6	53.2
Mangaung Rural	0.0	1.1	3.9	22.3	738.0	765.3
Soutpan	0.0	0.0	0.0	0.0	19.1	19.1
Thabanchu	0.0	0.0	8.6	46.5	361.0	416.1
Vanstadensrus	0.0	0.0	0.0	4.0	16.1	20.1
Wepener	0.0	0.0	0.0	8.4	52.6	61.0
<b>Grand Total</b>	<b>30.2</b>	<b>30.7</b>	<b>210.6</b>	<b>391.5</b>	<b>3168.0</b>	<b>3831.0</b>

# Road Infrastructure Networks/2

## Road Condition:

In general, around 60% (1596+716= 2312km) of the roads in Mangaung Metropolitan Municipality are in a poor or very poor condition with Wepener having the worst conditions and Bloemfontein the best.

Municipality	Road General Condition (km)					Total
	1 - Very Good	2 - Good	3 - Fair	4 - Poor	5 - Very Poor	
Bloemfontein	133	386	378	327	547	1 770
Botshabelo	102	60	32	112	341	646
Dewetsdorp	3	6	3	7	24	43
Mangaung Rural	16	34	70	169	470	758
Soutpan	0	0	2	4	9	15
Thabanchu	35	25	94	88	161	403
Vanstadensrus	2	0	2	4	11	18
Wepener	4	2	3	5	34	48
<b>Grand Total</b>	<b>294</b>	<b>513</b>	<b>584</b>	<b>716</b>	<b>1 596</b>	<b>3 702</b>

# Road Infrastructure Networks/3

## Current Asset Replacement Costs

- Total asset replacement cost is R 6.8 Billion.

Municipality	Road Current Replacement Cost (CRC R1000s)			Total
	Formation	Pavement	Surfacing	
Bloemfontein	R 1 798 192	R 2 204 902	R 791 972	R 4 795 065
Botshabelo	R 411 159	R 276 374	R 102 751	R 790 285
Dewetsdorp	R 41 687	R 36 091	R 7 900	R 85 678
Mangaung Rural	R 384 997	R 156 205	R 50 447	R 591 649
Soutpan	R 4 913	R 1 664	R 0	R 6 577
Thabanchu	R 242 962	R 116 671	R 36 187	R 395 820
Vanstadensrus	R 11 897	R 5 996	R 1 129	R 19 023
Wepener	R 41 658	R 31 206	R 5 454	R 78 318
<b>Grand Total</b>	<b>R 2 937 465</b>	<b>R 2 829 109</b>	<b>R 995 841</b>	<b>R 6 762 414</b>

# Required Annual Maintenance Budget (R '000)

<b>Annual Need as percentage of CRC</b>	<b>2.50%</b>
Bloemfontein	<b>R 119 877</b>
Botshabelo	<b>R 19 757</b>
Dewetsdorp	<b>R 2 142</b>
Mangaung Rural	<b>R 14 791</b>
Soutpan	<b>R 164</b>
Thabanchu	<b>R 9 896</b>
Vanstadensrus	<b>R 476</b>
Wepener	<b>R 1 958</b>
<b>Grand Total</b>	<b>R 169 060</b>

Current budget is **R 20 million**

# Road Maintenance Progress



# Road Maintenance Progress



# Health Facilities Infrastructure

Town	Clinics	Hospital	Private medical centre	Private Hospital	Total
Mangaung	18	4	4	7	33
Botshabelo	13	1	0	0	14
Thaba Nchu	12	1	0	0	13
Wepener	1	0	0	0	1
Dewetsdorp	1	0	0	0	1
Van Stadensrus /Thapelong	1	0	0	0	1
Soutpan/Ikgomotse ng	1	0	0	0	1
<b>Total</b>	<b>47</b>	<b>6</b>	<b>4</b>	<b>7</b>	<b>64</b>



# Community Facilities Infrastructure

## Community Facilities

Town	Police Station	Magistrates Court	Correctional Services	Fire Services
Mangaung	11	5	1	3
Botshabelo	2	1	-	-
Thaba-Nchu	2	-	-	1
Wepener	1	1	1	-
Dewetsdorp	1	-	-	1
Van Stadensrus	1	-	-	-
Soutpan	1	-	-	-
Tierpoort	1	-	-	-
<b>Total</b>		<b>7</b>	<b>2</b>	<b>5</b>

# Waste Removal

Area	ESTIMATED HOUSEHOLDS	PERSONNEL		TRUCKS	
		Current Personnel	Required Personnel	Current Trucks	Required Trucks
Botshabelo	67 506	19	49	2	7
Thaba-Nchu	26000	27	27	1	3
Bloemfontein South	97 300	70	91	5	13
Bloemfontein North	69 902	53	65	5	9
Naledi	10 000	12	12	1	2
Soutpan	2000	4	4	0	1 Flat Back
<b>Total</b>	272 708	185	248	14	35
<b>Deficit</b>			<b>63</b>		<b>21</b>

# TOWN AND REGIONAL PLANNING



MANGAUNG

# Township establishment projects

No of projects	Description	No of sites created	Progress
7	Township Establishment projects completed	9 307	Projects complete
2	Current Township Establishment projects	6 100	Draft layout plans completed
11	Infill and In situ Projects	221	Awaiting SG Approval
13	Infill and In situ Projects	1 672	Layout Plan completed
	<b>TOTAL SITES CREATED</b>	<b>17 300</b>	

# Current town planning infill and in situ projects (2)

Description of Project	No of Sites	Status/Progress
1.Erf 21092 Grassland 3	4 residential sites	Awaiting SG Approval
2.Erf 53541 Thepe Square	4 residential sites	Awaiting SG Approval
3. Erf 7866, 7878, 7933 and 7934 Namibia	20 residential sites, 1 business site and 1 street	Layout plan completed
4. Erf 4945 Bloemside	6 sites	Layout plan completed
5. Erf 43300 Rocklands	6 residential erven	Awaiting SG Approval
6.Erf 7138, 7139, 7140, 7141 Bloemside 4	Proposed sites = 60	Awaiting SG Approval
7. Erf 374, 409, 444, 479, 761, 798 and 613 JB Mafora	Proposed sites = 6	Awaiting SG Approval
8. Erf 28563 Chris Hani	Proposed sites = 14	Awaiting SG Approval
9. Erf 29214 Chris Hani	Proposed sites = 71	Awaiting SG Approval
10. Erf 22877, 22878 and 22879 Rocklands	Proposed sites= 70	Layout plan completed
11. Erf 20727 and 20729 Grasslands 3	Proposed sites =3	Awaiting SG Approval
12. Erf 20743 and 22064 Grasslands 3	Proposed sites =3	Awaiting SG Approval

# Current town planning infill and in situ projects (2)

Description of Project	No of Sites	Status/Progress
13. Erf 19939 Grasslands	Proposed sites =2	Awaiting SG Approval
14. Erf 39688, 39701, 39702, 39482, 53820 Erf 54680, 54681, 54682 Tambo Square (Business sites)	Proposed sites= 48	Awaiting SG Approval
16. Botshabelo H 2873	58 Residential sites	Layout plan completed
17. Botshabelo G 1011	110 Residential sites	Layout plan completed
18. Botshabelo E1901	6 Residential Sites	Layout plan completed
19. Bothsabelo E1969	5 Residential Sites	Layout plan completed
20. Botshabelo M2478	124 Residential sites	Layout plan completed
21. Botshabelo H3225 & 3226	398 Residential sites	Layout plan completed
22. Botshabelo S 1002 & 1006	164 Residential Sites	Layout plan completed
23. Botshabelo L211 & 212	342 Residential Sites	Layout plan completed
24. Botshabelo U 3245, 3636 & 3637	369 Residential Sites	Layout plan completed

# Successes

- Western Areas Road Network Master Plan and Structure Plans/Local Areas Plans for a numerous areas within Bloemfontein to facilitate development was completed
- Town planning processes for catalytic projects of the municipality i.e Airport Node Development, Cecilia Park, Brandkop etc were completed



MANGAUNG

# **MUNICIPAL PLANNING TRIBUNAL (MPT)**



**MANGAUNG**



- Section 35 (1) of the Spatial Planning and Land Use Management Act (Act No. 16 of 2013) requires the Municipality to establish a Municipal Planning Tribunal, to determine land use and development applications within its municipal area.
- The regulations in terms of section 54 of Act 16 of 2013 give the statutory framework to operationalize and give effect to the Municipal Planning Tribunal.



# **GEOGRAPHIC INFORMATION SERVICES AND OUT DOOR ADVERTISING**



**MANGAUNG**

# Spatial Development Framework Review

Key Activity	Status/Percentage	Comments
Comprehensive review of SDF to be Spluma Compliant	100%	Approved by Council during May 2020
Metropolitan Open Spaces (MOSS)	98%	Going for public comments then Council for approval
Land Use Management System (LUMS)	70%	To go for public participation planned to be completed May 2020

# ENVIRONMENTAL MANAGEMENT



MANGAUNG

# Successes of Environmental Management

The drafting and approval of the following policies:

- The Environmental Management Policy
- The Climate Change Adaptation and Mitigation Policy and Strategy
- The SoER: State of the Environment Policy
- The EI&MP: Environmental Implementation and Management Plan
- The EMF: Environmental Management Framework
- The Alien Species Management Plan
- In 2017/2018, MMM participated in the National Greenest Municipality Competition were runners-up.
- Two officials were trained as Green Scorpions, to assist the MMM in law enforcing and issuing of fines on illegal environment practices

# Impact of S139 Intervention



MANGAUNG

# Provincial Intervention

- Provincial EXCO took a decision on 19 December 2019 to place Mangaung Metropolitan Municipality under Section 139(5)(a) and (c) of the Constitution.
- MMM Council also took a decision on 24 December 2019 to accept and support the intervention.
- Intervention which translates into a mandatory financial recovery plan and the replacement of the voluntary one that was approved in 2018.
- In January 2020, the deployment of an Intervention Team to the City to assist with issues of attainment of the objectives of the intervention took place.
- On the 11 February 2020, both Deputy Ministers of Finance and COGTA visited the City to address the full Council and the draft terms of reference were distributed.

## Provincial Intervention (2)

- The Technical War Room was also activated and it is meeting monthly.
- On the 13<sup>th</sup> May 2020, the MEC for Finance submitted to the City the terms of reference that as approved by Provincial EXCO on the 16<sup>th</sup> March 2020.
- During the Technical Ward Room meeting of the 19<sup>th</sup> May 2020, it was indicated that there was a legal opinion from the State Law Attorneys regarding some constitutional discrepancies and non-compliance of the terms of reference.
- On the 6<sup>th</sup> June 2020 the City was made aware of a follow up opinion dated the 25<sup>th</sup> May 2020 was submitted.
- On the 28<sup>th</sup> May 2020, the terms of reference were submitted to Council and based on the pending submission of the legal opinion then, Council resolved to also subject them to legal scrutiny.



## Provincial Intervention (3)

- Currently there are 2 members of Provincial Intervention that are permanently deployed in the City.
- The working arrangements of the intervention is that there should be concurrence between the City's executive and intervention team on all statutory financial and human resource powers and functions of the *Municipal Manager* and the *Chief Financial Officer*.



**THANK YOU**



**MANGAUNG**