



Free State Municipal Profiles

**Mangaung
Maluti-a-Phofung
Matjhabeng
Metsimaholo**

FREE STATE PROVINCE



treasury
Department of
Treasury
FREE STATE PROVINCE

www.fs.gov.za

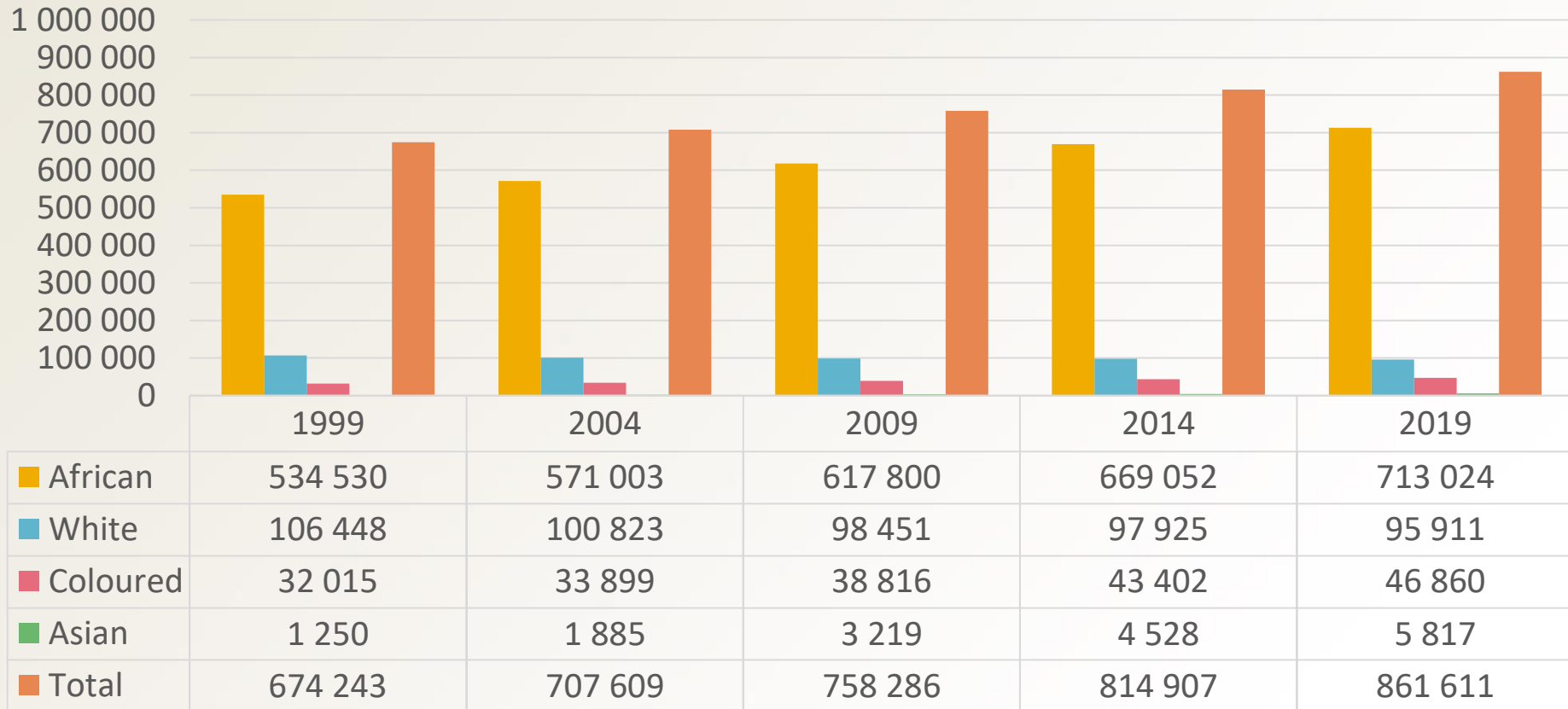
Mangaung Metro



treasury
Department of
Treasury
FREE STATE PROVINCE

www.fs.gov.za

Mangaung population



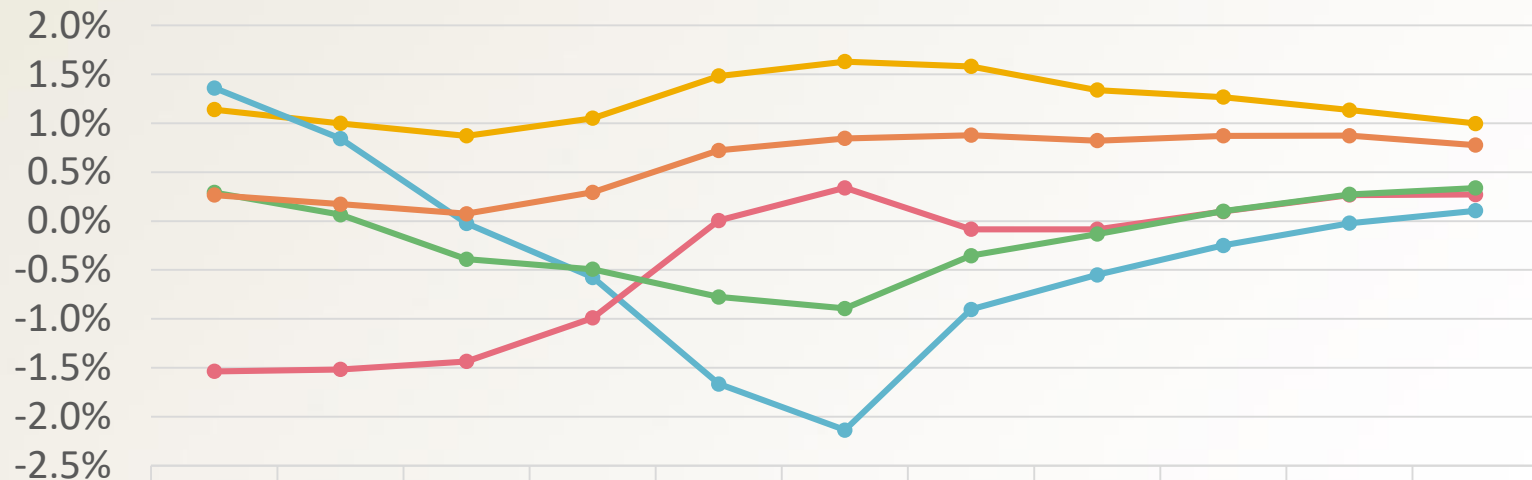
Source: IHS Markit, Regional eXplorer version 1991



treasury
Department of
Treasury
FREE STATE PROVINCE

www.fs.gov.za

Population growth rates



	2000	2001	2003	2005	2007	2009	2011	2013	2015	2017	2019
Mangaung	1.1%	1.0%	0.9%	1.1%	1.5%	1.6%	1.6%	1.3%	1.3%	1.1%	1.0%
Xhariep	1.4%	0.8%	0.0%	-0.6%	-1.7%	-2.1%	-0.9%	-0.6%	-0.2%	0.0%	0.1%
Lejweleputswa	-1.5%	-1.5%	-1.4%	-1.0%	0.0%	0.3%	-0.1%	-0.1%	0.1%	0.3%	0.3%
Thabo Mofutsanyane	0.3%	0.1%	-0.4%	-0.5%	-0.8%	-0.9%	-0.4%	-0.1%	0.1%	0.3%	0.3%
Fezile Dabi	0.3%	0.2%	0.1%	0.3%	0.7%	0.8%	0.9%	0.8%	0.9%	0.9%	0.8%

Source: IHS Markit, Regional eXplorer version 1991

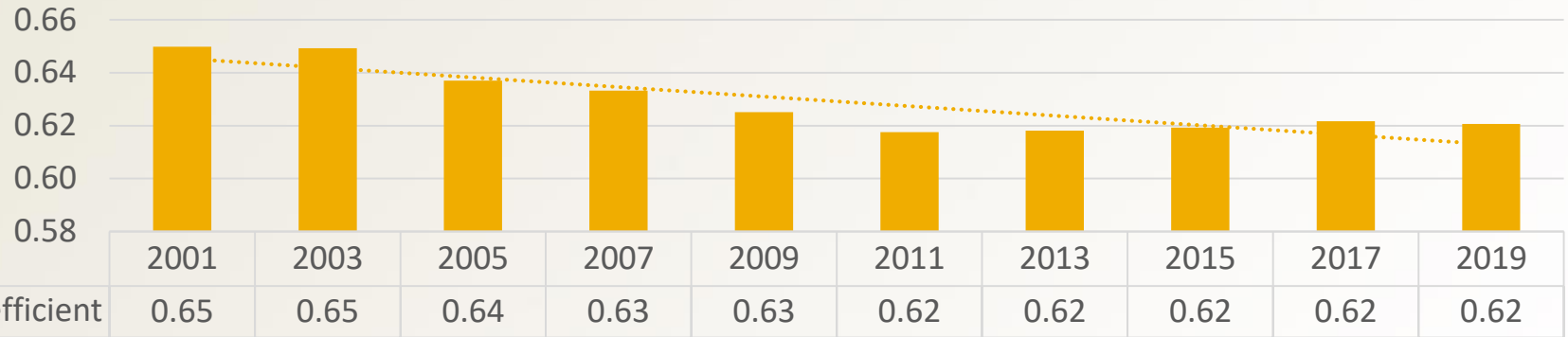


treasury
Department of
Treasury
FREE STATE PROVINCE

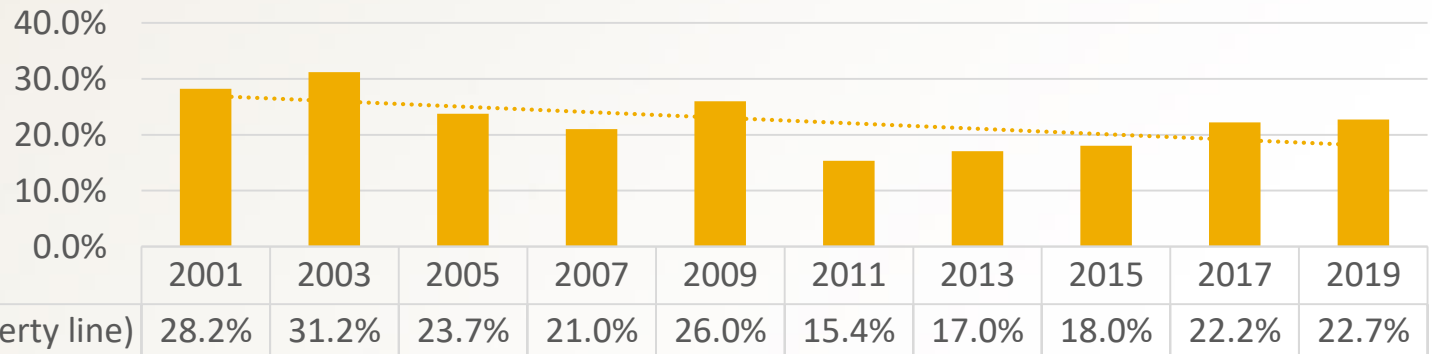
www.fs.gov.za

Development indicators

Gini coefficient (inequality)



Poverty rate (food poverty line)



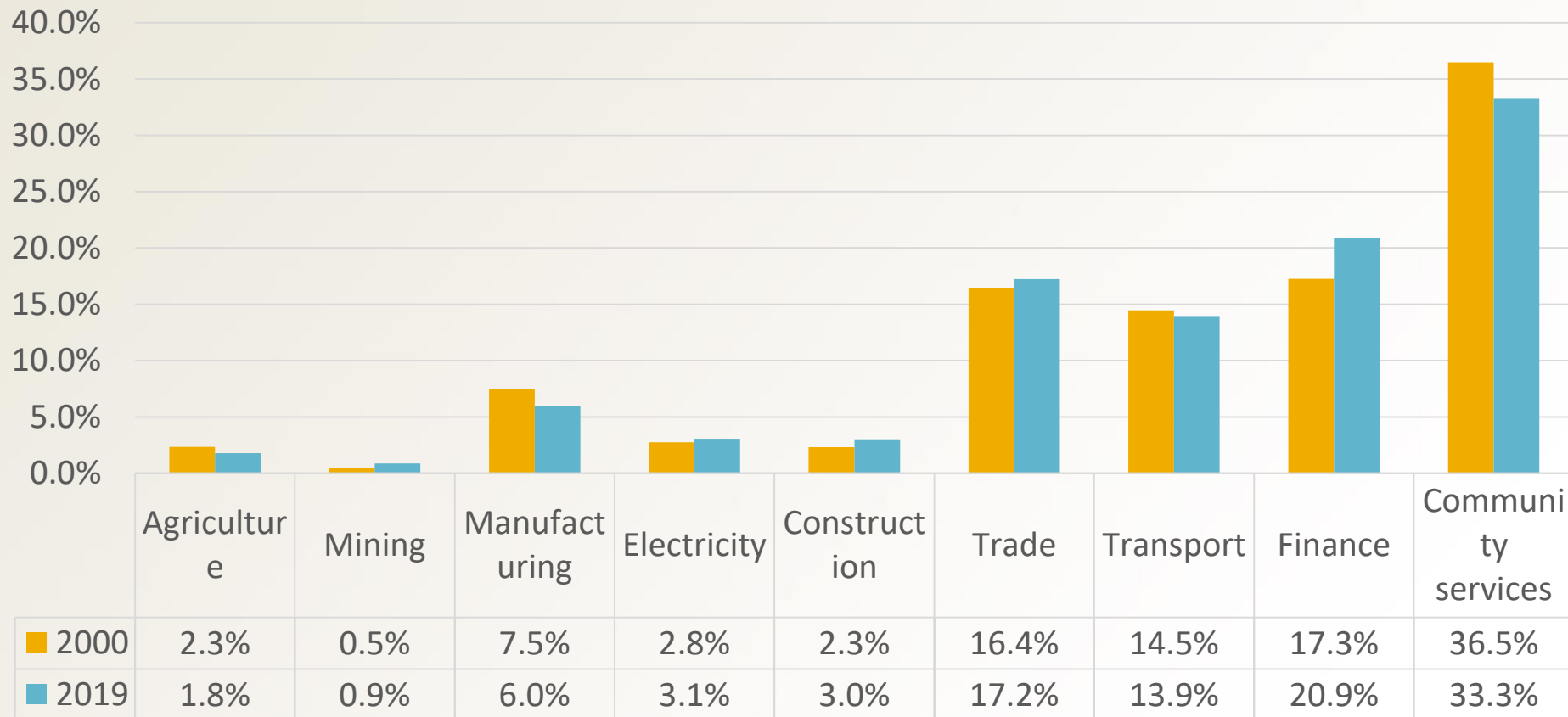
Source: IHS Markit, Regional eXplorer version 1991



treasury
Department of
Treasury
FREE STATE PROVINCE

www.fs.gov.za

GDP contribution per sector



Source: IHS Markit, Regional eXplorer version 1991

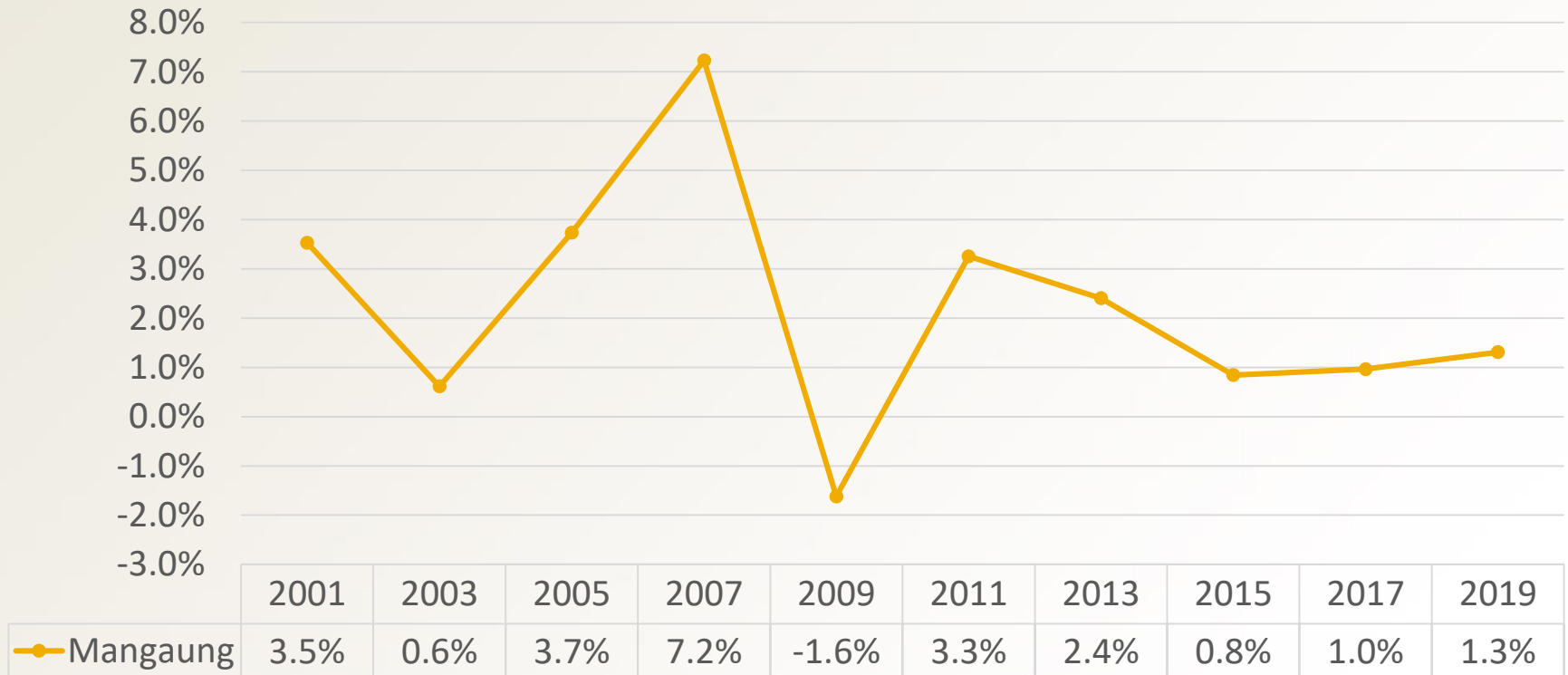


treasury
Department of
Treasury
FREE STATE PROVINCE

www.fs.gov.za

GDP growth rate

Mangaung GDP growth rate



Source: IHS Markit, Regional eXplorer version 1991



treasury
Department of
Treasury
FREE STATE PROVINCE

www.fs.gov.za

Economic Outlook

	2015	2016	2017	2018	2019	2020	2021	2022	2023	2024
Agriculture	-24.0%	-19.0%	30.8%	-0.4%	-6.6%	6.5%	-0.9%	1.4%	2.8%	2.4%
Mining	15.8%	-0.9%	8.6%	-9.4%	-9.2%	-13.6%	10.3%	0.4%	-0.5%	-0.4%
Manufacturing	0.4%	-1.2%	1.5%	1.4%	0.2%	-9.8%	4.4%	2.4%	1.9%	1.6%
Electricity	-1.4%	-1.9%	0.6%	1.5%	-2.7%	-7.7%	2.3%	-0.4%	0.4%	0.5%
Construction	1.9%	0.6%	-1.0%	-0.8%	-2.4%	-26.2%	5.2%	1.5%	2.4%	2.5%
Trade	1.2%	0.7%	0.1%	0.6%	1.1%	-13.0%	2.9%	1.3%	1.5%	1.3%
Transport	2.0%	1.3%	0.9%	1.0%	0.2%	-10.2%	2.8%	1.4%	1.9%	2.0%
Finance	0.7%	1.9%	1.2%	1.9%	2.9%	-1.7%	1.2%	2.5%	2.2%	2.6%
Community services	1.4%	1.1%	1.0%	1.3%	2.7%	-5.9%	-1.0%	0.8%	0.0%	0.8%
Total Industries	1.0%	0.7%	1.2%	0.9%	1.4%	-7.9%	1.4%	1.4%	1.2%	1.5%

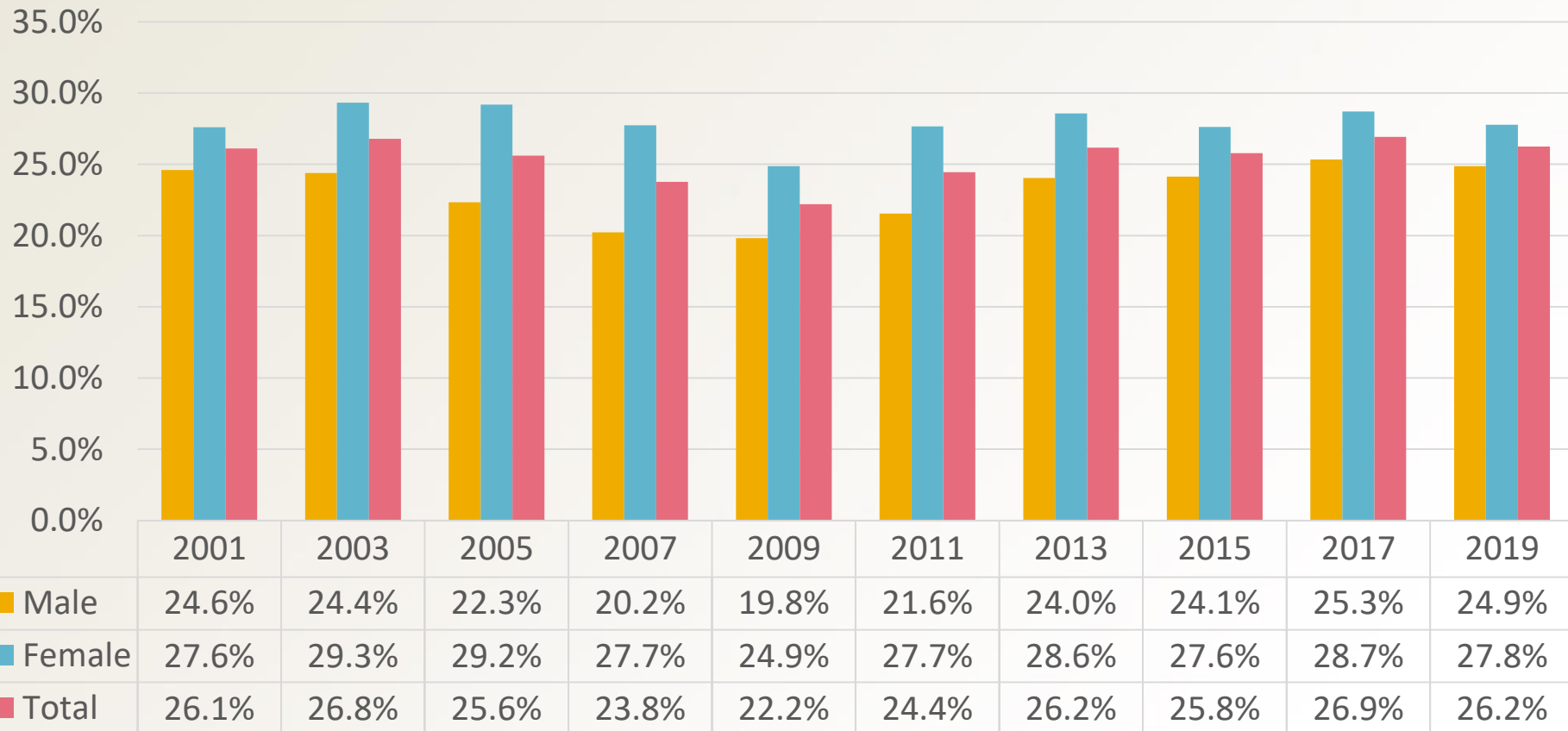
Source: IHS Markit, Regional eXplorer version 1991



treasury
Department of
Treasury
FREE STATE PROVINCE

www.fs.gov.za

Total unemployment rates



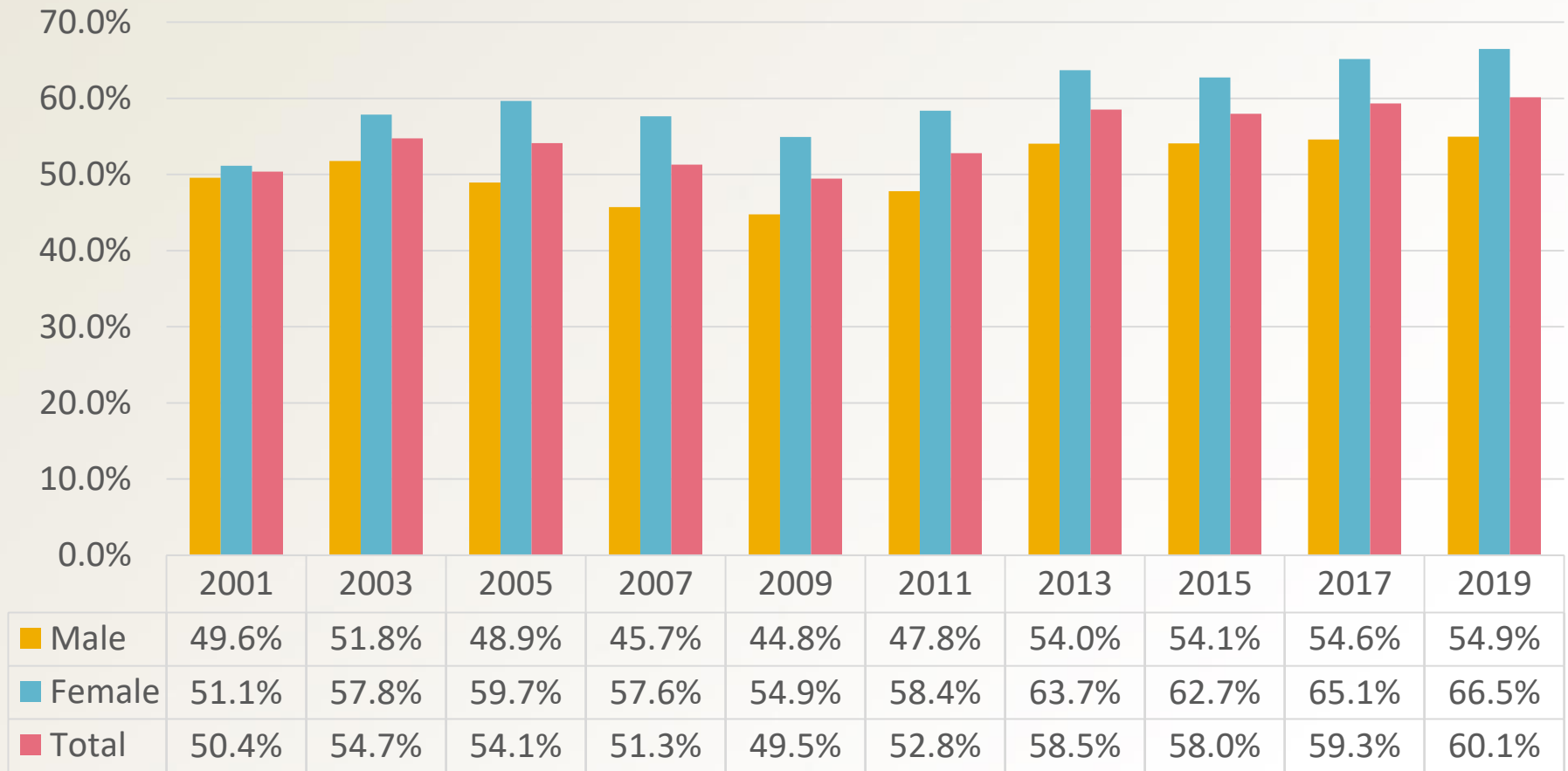
Source: IHS Markit, Regional eXplorer version 1991



treasury
Department of
Treasury
FREE STATE PROVINCE

www.fs.gov.za

Youth unemployment rates (15 – 24 years)



Source: IHS Markit, Regional eXplorer version 1991



treasury
Department of
Treasury
FREE STATE PROVINCE

www.fs.gov.za

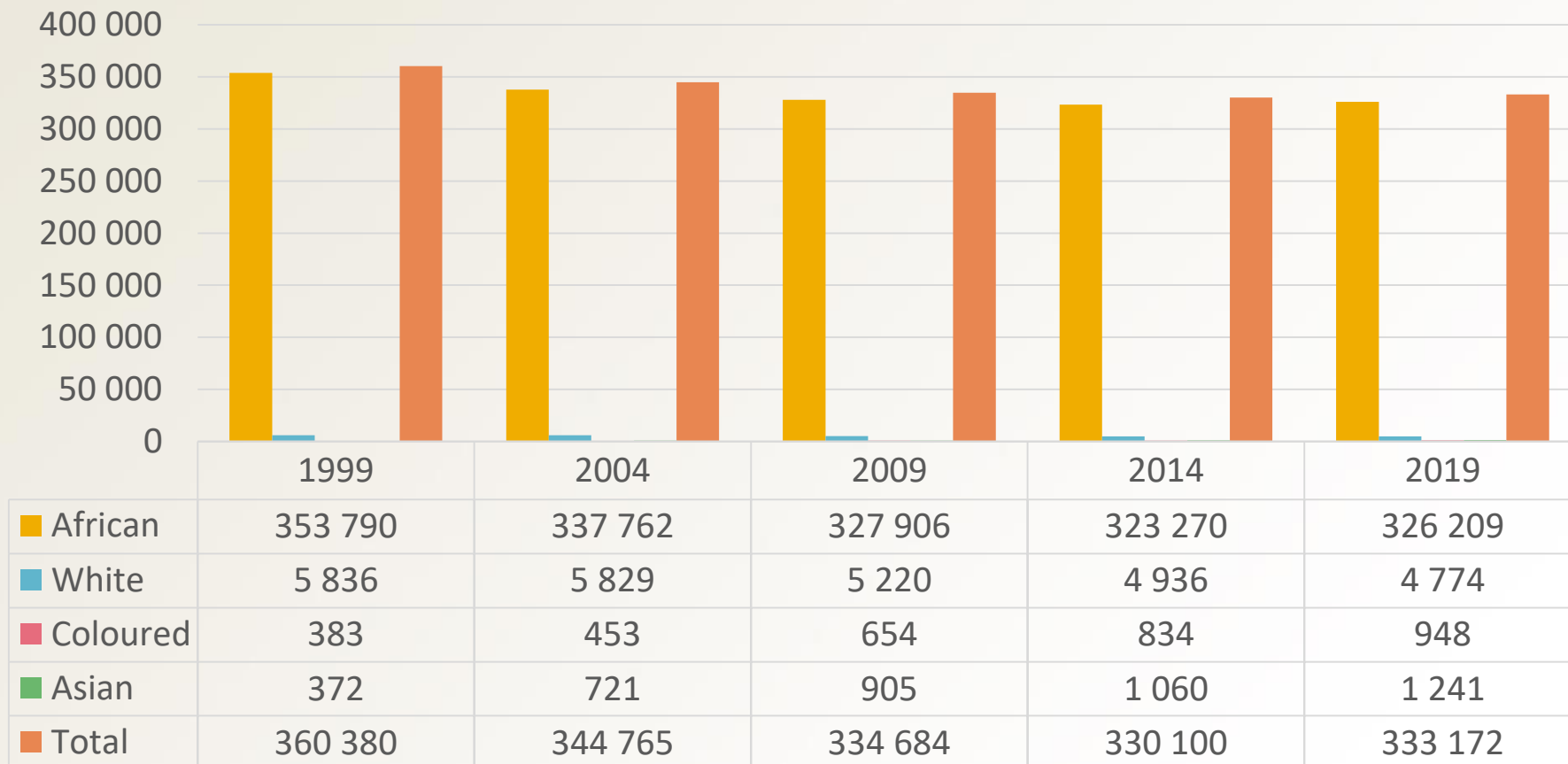
Maluti-a-Phofung



treasury
Department of
Treasury
FREE STATE PROVINCE

www.fs.gov.za

Maluti-a-Phofung Population



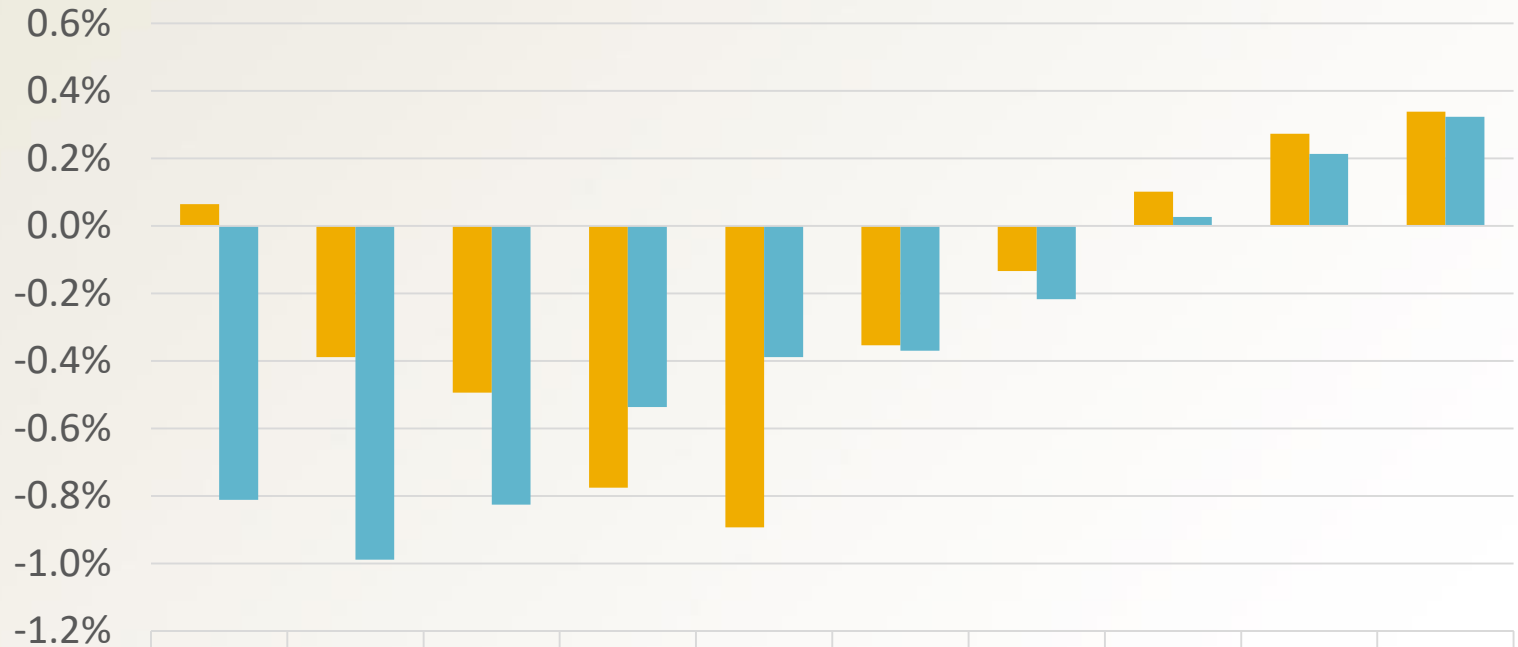
Source: IHS Markit, Regional eXplorer version 1991



treasury
Department of
Treasury
FREE STATE PROVINCE

www.fs.gov.za

Population growth rates



■ Thabo Mofutsanyane

■ Maluti-a-Phofung

	2001	2003	2005	2007	2009	2011	2013	2015	2017	2019
Thabo Mofutsanyane	0.1%	-0.4%	-0.5%	-0.8%	-0.9%	-0.4%	-0.1%	0.1%	0.3%	0.3%
Maluti-a-Phofung	-0.8%	-1.0%	-0.8%	-0.5%	-0.4%	-0.4%	-0.2%	0.0%	0.2%	0.3%

Source: IHS Markit, Regional eXplorer version 1991

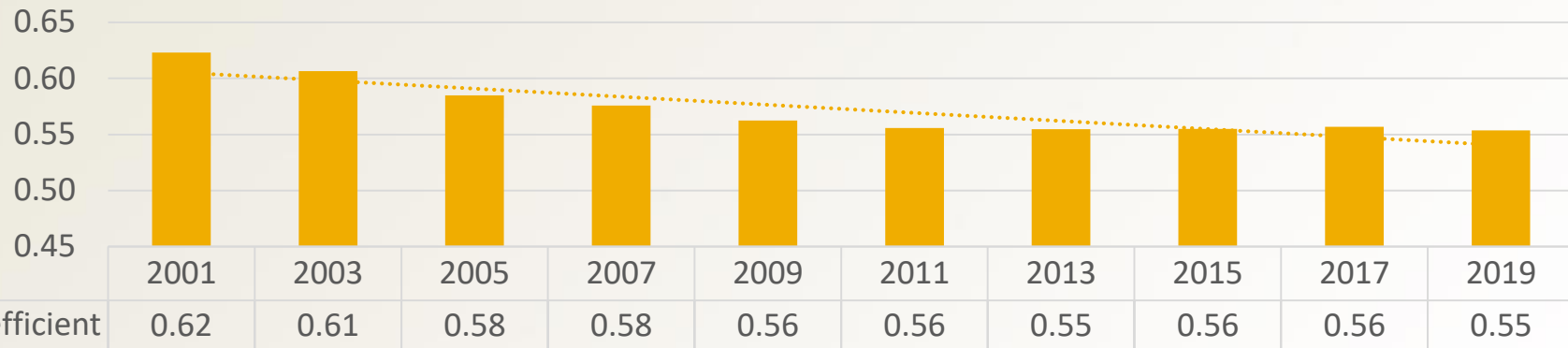


treasury
Department of
Treasury
FREE STATE PROVINCE

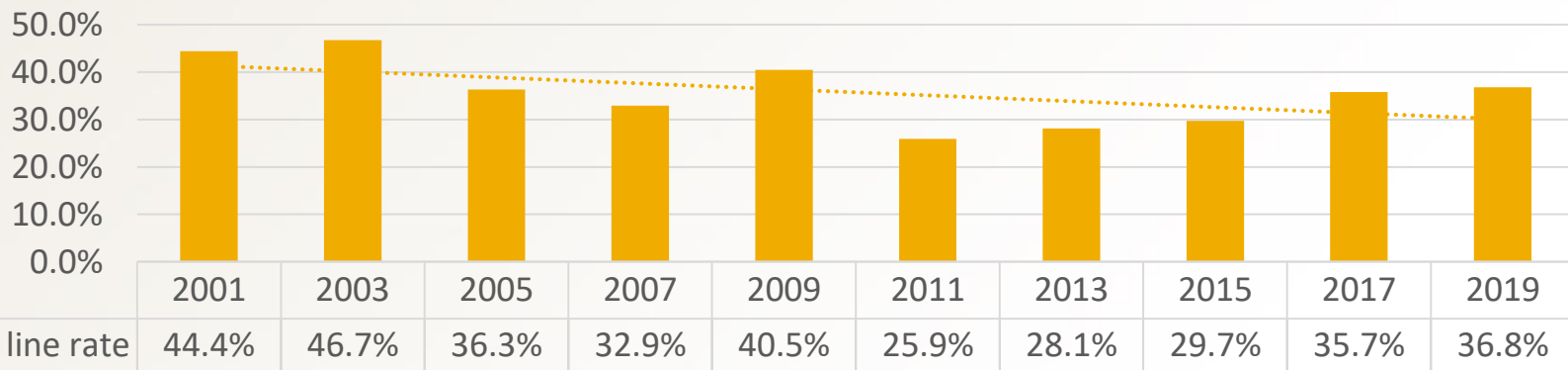
www.fs.gov.za

Development indicators

Gini coefficient (Inequality)



Food poverty line rate



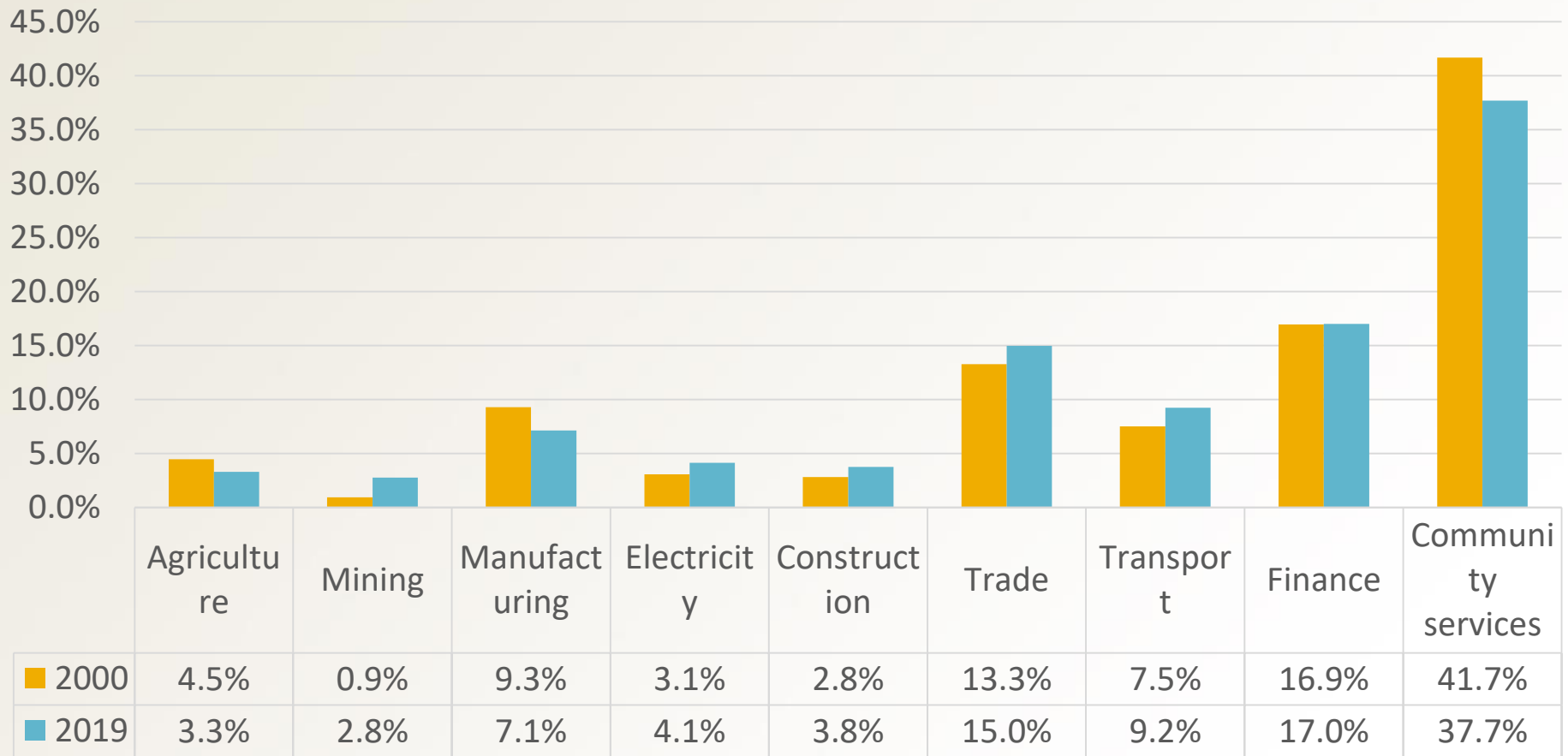
Source: IHS Markit, Regional eXplorer version 1991



treasury
Department of
Treasury
FREE STATE PROVINCE

www.fs.gov.za

GDP contribution per sector



Source: IHS Markit, Regional eXplorer version 1991



treasury
Department of
Treasury
FREE STATE PROVINCE

www.fs.gov.za

GDP growth rate

Maluti-a-Phofung



	2001	2003	2005	2007	2009	2011	2013	2015	2017	2019
Maluti-a-Phofung	-0.2%	-1.1%	2.3%	5.3%	-3.5%	1.2%	0.5%	-0.5%	0.2%	-0.3%

Source: IHS Markit, Regional eXplorer version 1991



treasury
Department of
Treasury
FREE STATE PROVINCE

www.fs.gov.za

Economic Outlook

	2015	2016	2017	2018	2019	2020	2021	2022	2023	2024
Agriculture	-24.4%	-18.8%	28.7%	-1.6%	-9.4%	5.9%	-1.1%	1.2%	2.6%	2.3%
Mining	1.3%	-12.7%	-4.1%	-5.5%	0.9%	-2.2%	6.7%	0.8%	0.4%	0.7%
Manufacturing	-0.9%	-2.2%	1.5%	0.8%	-2.5%	-10.4%	3.6%	2.2%	1.6%	1.4%
Electricity	1.2%	-2.0%	-7.4%	9.1%	-5.1%	-7.7%	1.8%	-0.4%	0.4%	0.4%
Construction	1.0%	-0.2%	-1.5%	-1.3%	-4.5%	-26.5%	5.0%	1.4%	2.2%	2.4%
Trade	1.3%	0.7%	0.4%	0.9%	-0.2%	-12.1%	2.7%	0.9%	1.3%	1.2%
Transport	0.0%	-0.8%	0.4%	0.2%	-2.1%	-10.0%	2.4%	1.0%	1.9%	2.0%
Finance	-0.5%	0.8%	-0.2%	1.2%	1.2%	-2.9%	0.9%	2.4%	2.1%	2.6%
Community services	0.7%	0.6%	0.0%	0.9%	0.6%	-5.9%	-1.5%	0.3%	0.0%	0.8%
Total Industries	-0.4%	-0.9%	0.3%	0.7%	-0.5%	-7.6%	0.9%	1.0%	1.0%	1.4%

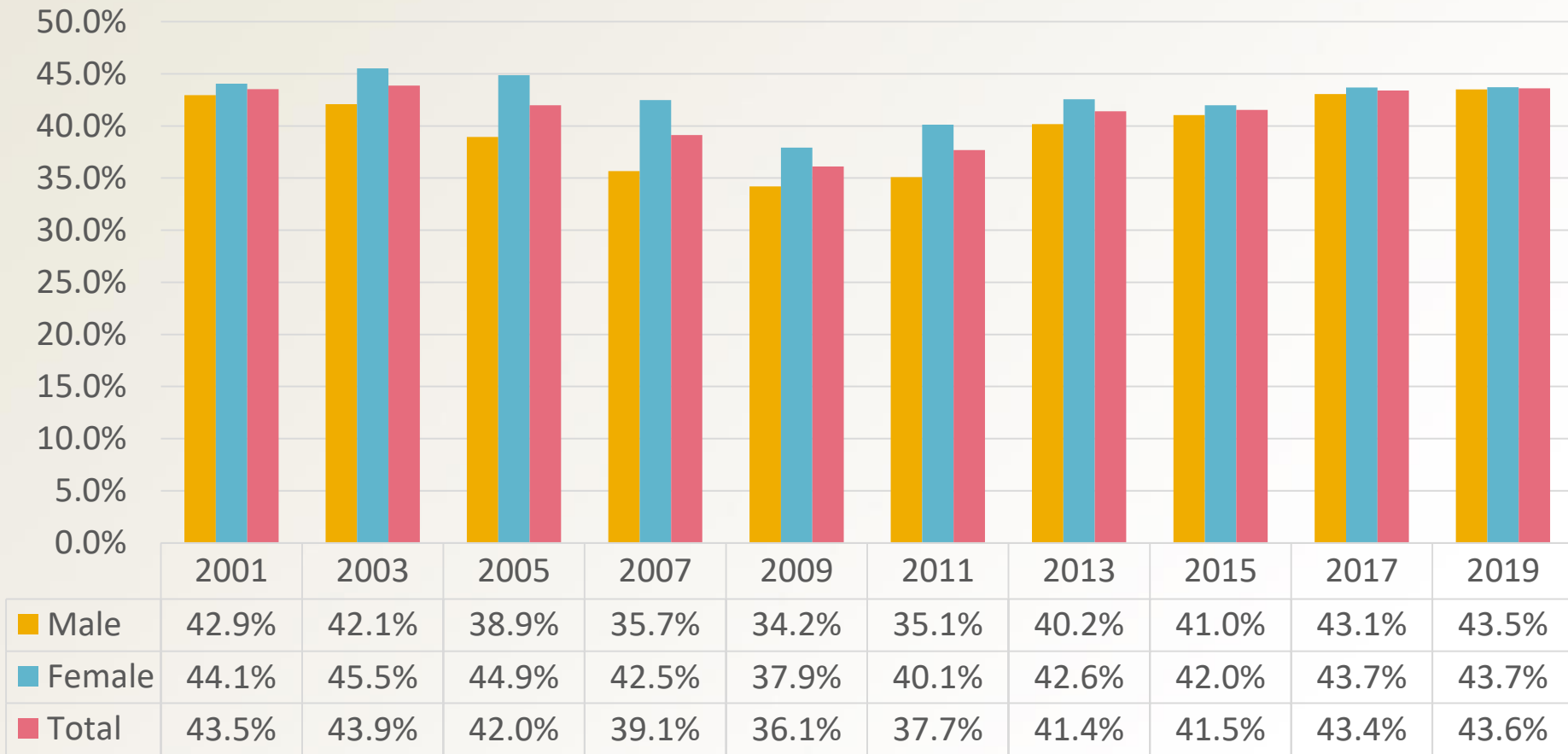
Source: IHS Markit, Regional eXplorer version 1991



treasury
Department of
Treasury
FREE STATE PROVINCE

www.fs.gov.za

Total unemployment rates



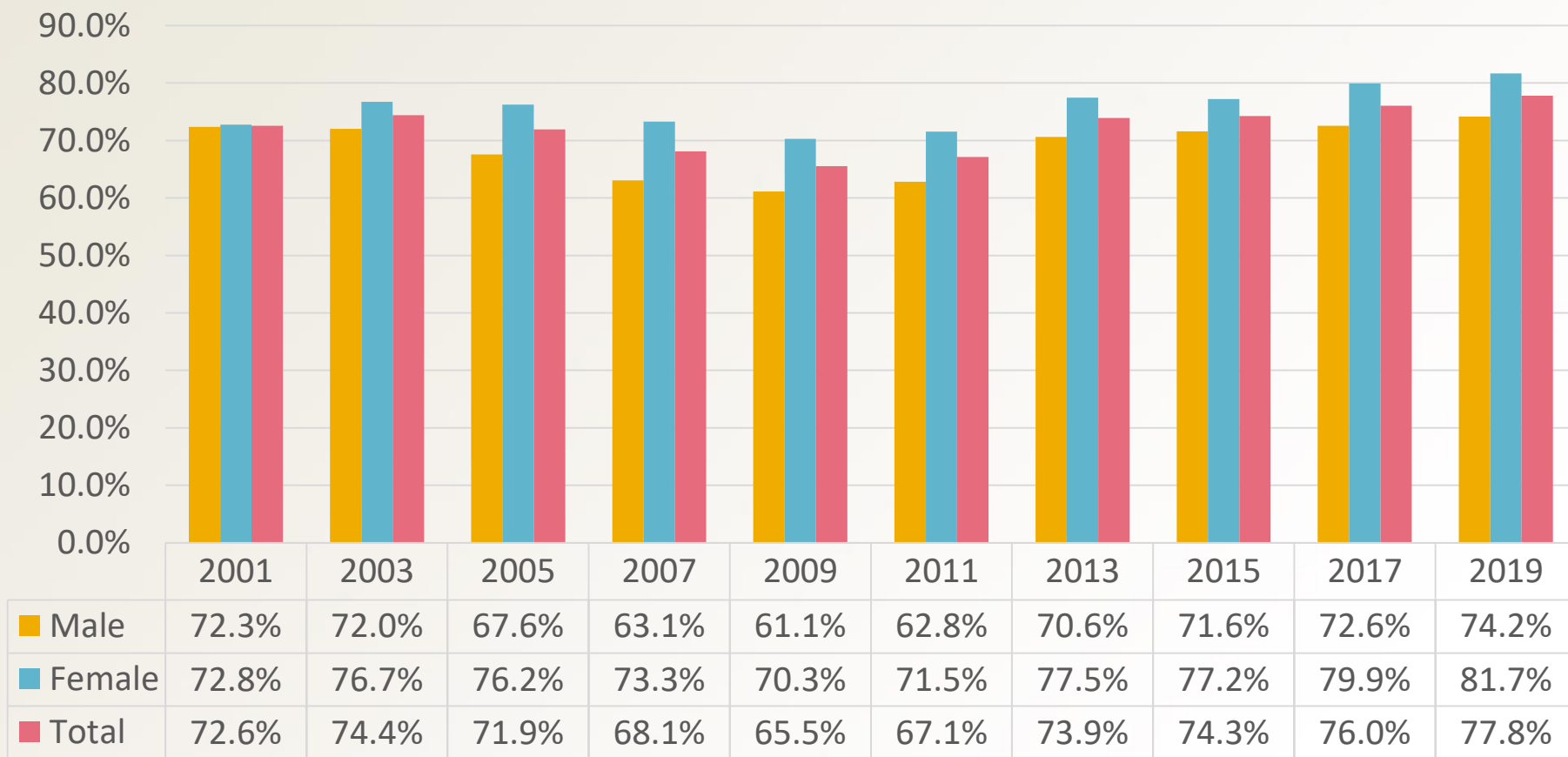
Source: IHS Markit, Regional eXplorer version 1991



treasury
Department of
Treasury
FREE STATE PROVINCE

www.fs.gov.za

Youth unemployment rates (15 – 24 years)



Source: IHS Markit, Regional eXplorer version 1991



treasury
Department of
Treasury
FREE STATE PROVINCE

www.fs.gov.za

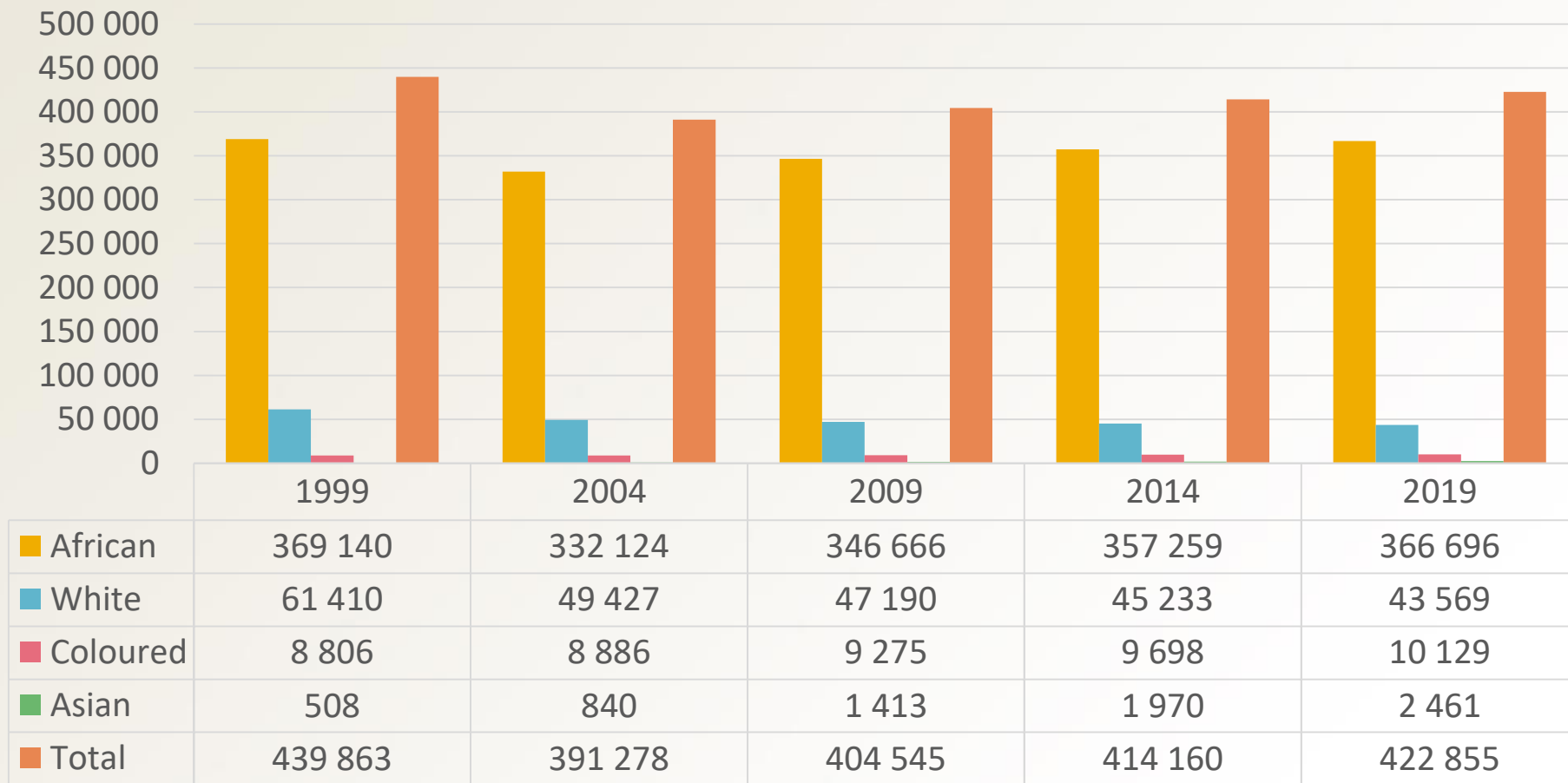
Matjhabeng Local Municipality



treasury
Department of
Treasury
FREE STATE PROVINCE

www.fs.gov.za

Matjhabeng population



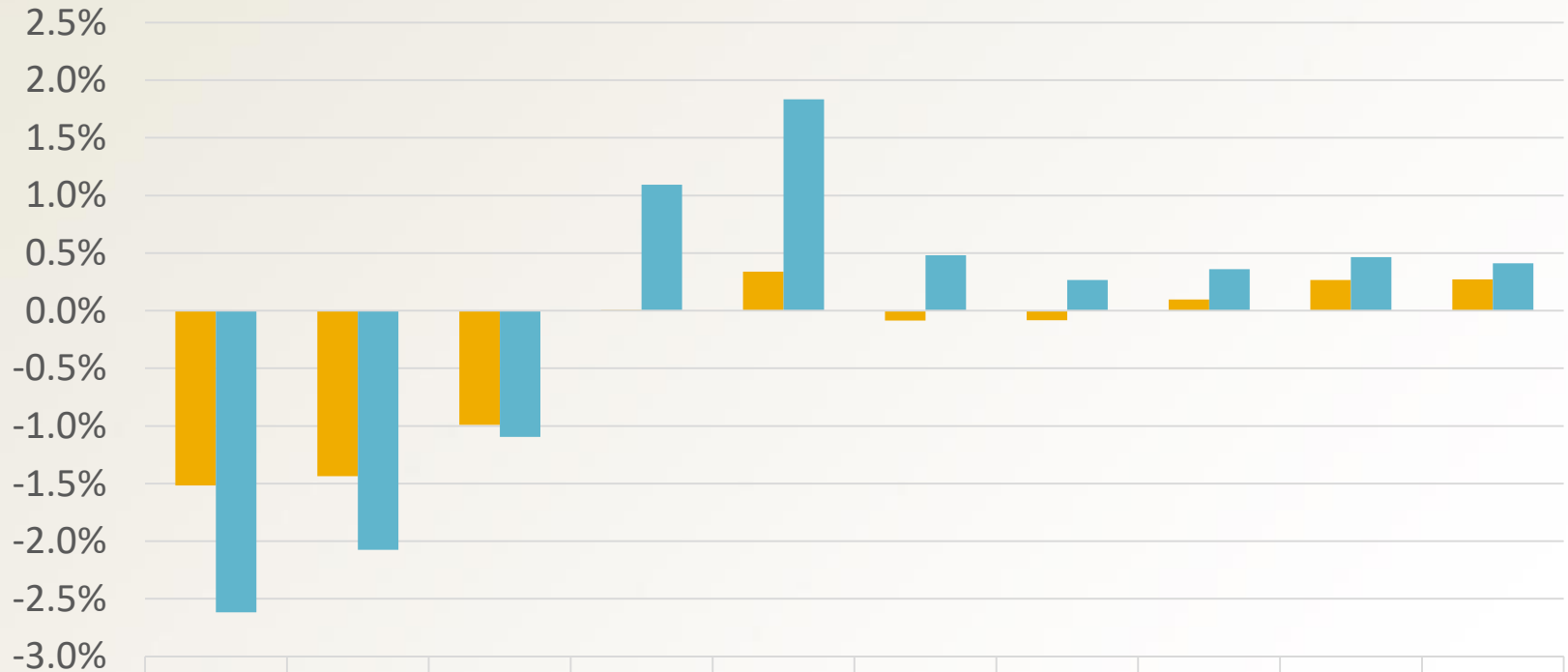
Source: IHS Markit, Regional eXplorer version 1991



treasury
Department of
Treasury
FREE STATE PROVINCE

www.fs.gov.za

Population growth rates



	2001	2003	2005	2007	2009	2011	2013	2015	2017	2019
■ Lejweleputswa	-1.5%	-1.4%	-1.0%	0.0%	0.3%	-0.1%	-0.1%	0.1%	0.3%	0.3%
■ Matjhabeng	-2.6%	-2.1%	-1.1%	1.1%	1.8%	0.5%	0.3%	0.4%	0.5%	0.4%

Source: IHS Markit, Regional eXplorer version 1991

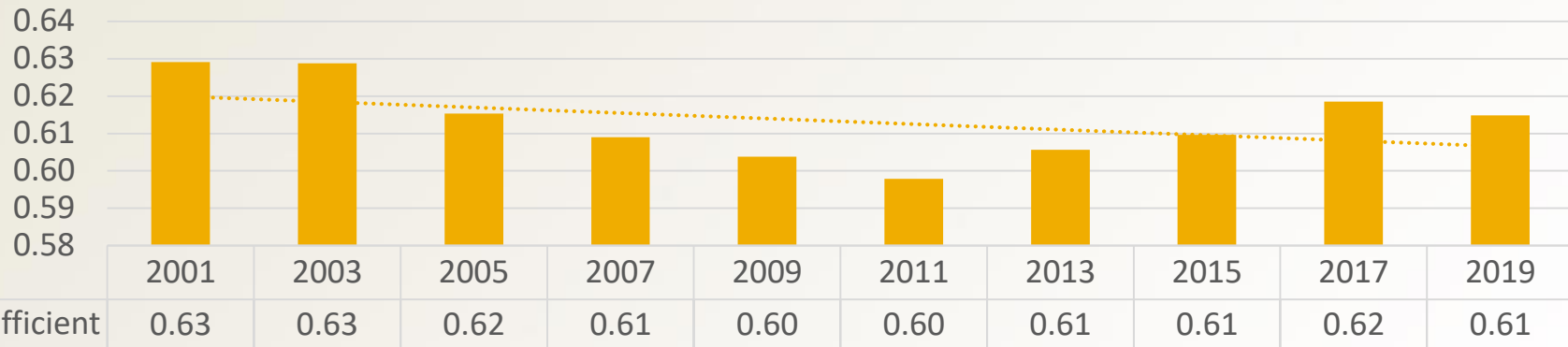


treasury
Department of
Treasury
FREE STATE PROVINCE

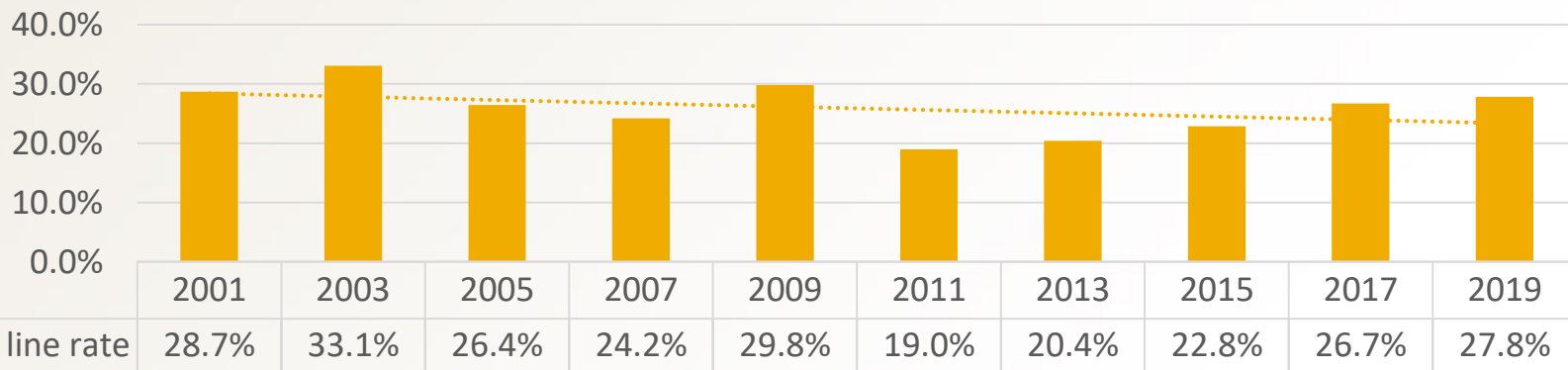
www.fs.gov.za

Development indicators

Gini coefficient (inequality)



Food poverty line rate



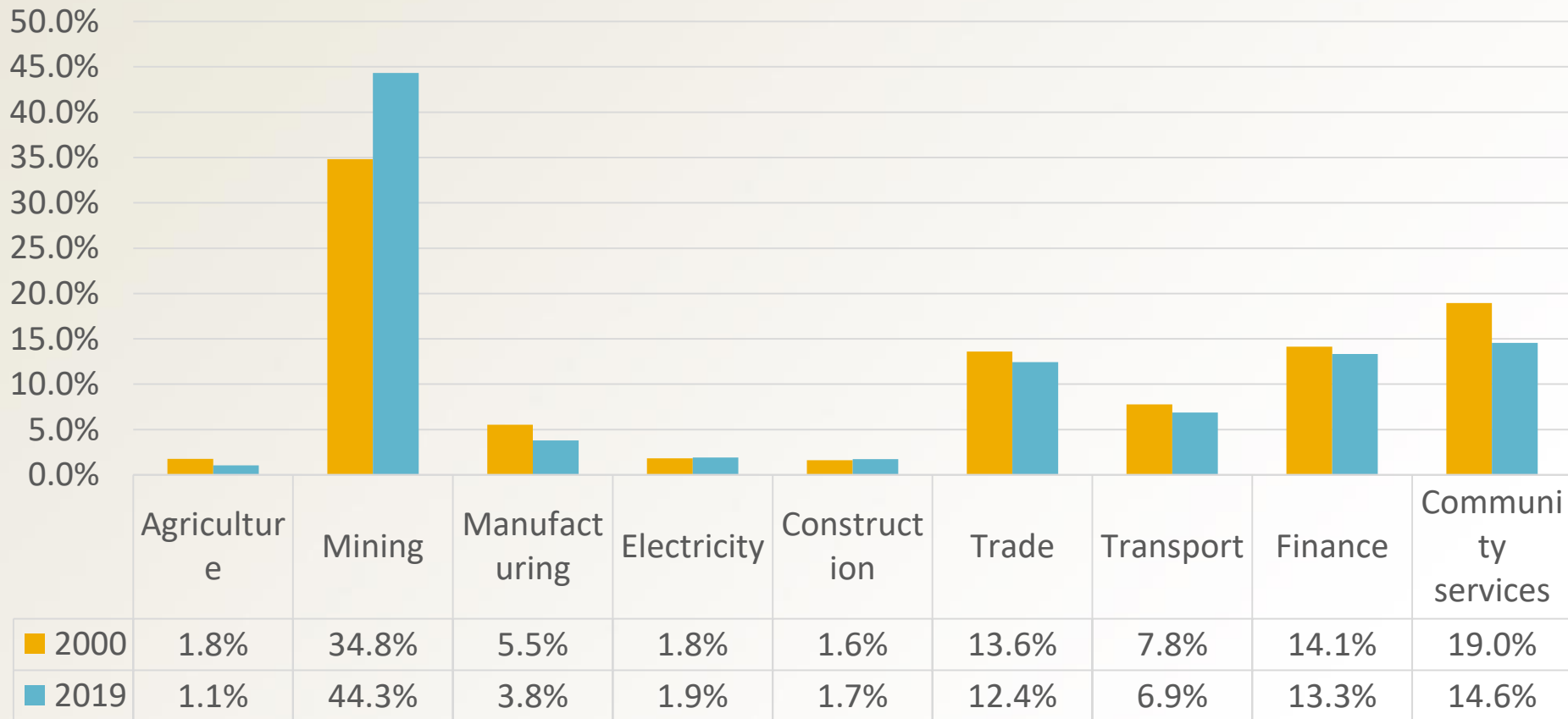
Source: IHS Markit, Regional eXplorer version 1991



treasury
Department of
Treasury
FREE STATE PROVINCE

www.fs.gov.za

GDP contribution per sector



Source: IHS Markit, Regional eXplorer version 1991

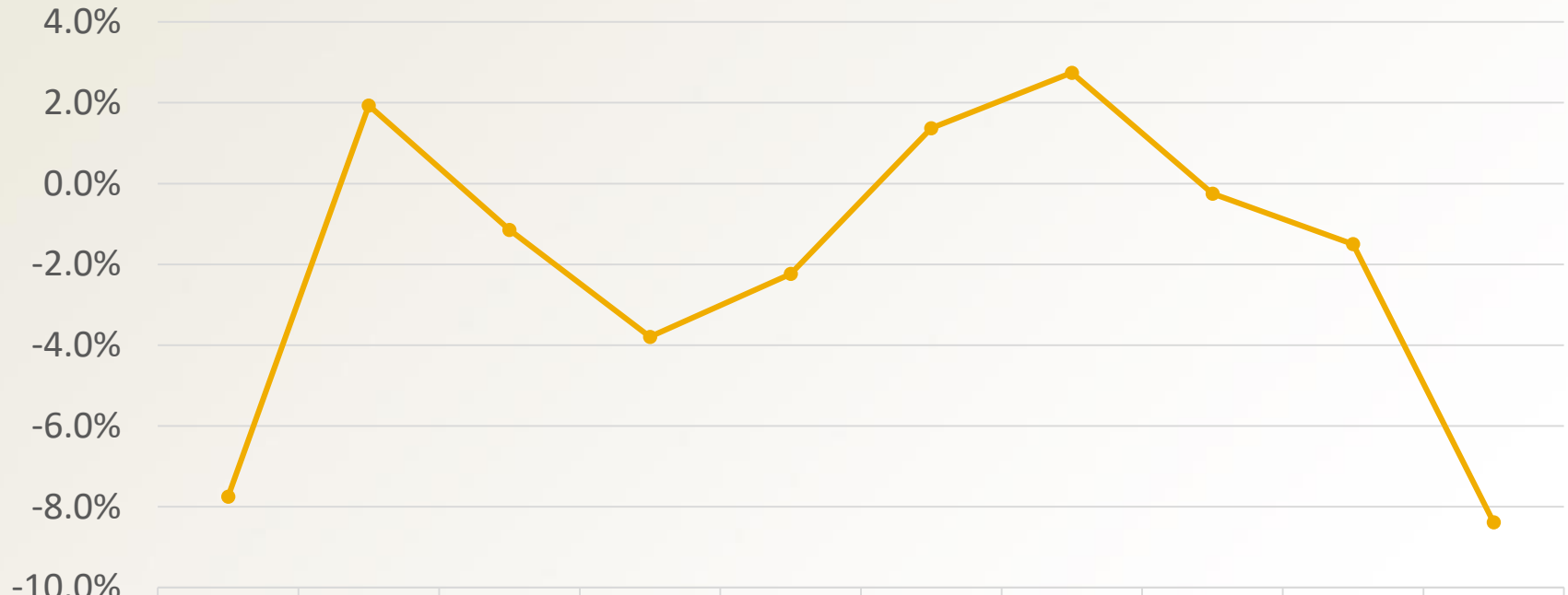


treasury
Department of
Treasury
FREE STATE PROVINCE

www.fs.gov.za

GDP growth rate

Matjhabeng



	2001	2003	2005	2007	2009	2011	2013	2015	2017	2019
—●— Matjhabeng	-7.7%	1.9%	-1.1%	-3.8%	-2.2%	1.4%	2.7%	-0.2%	-1.5%	-8.4%

Source: IHS Markit, Regional eXplorer version 1991



treasury
Department of
Treasury
FREE STATE PROVINCE

www.fs.gov.za

Economic Outlook

	2015	2016	2017	2018	2019	2020	2021	2022	2023	2024
Agriculture	-24.9%	-18.8%	28.6%	-1.6%	-15.9%	5.7%	-1.6%	0.8%	2.4%	2.1%
Mining	-1.4%	-3.6%	-3.9%	-17.0%	-9.3%	-21.6%	16.9%	-5.0%	-5.3%	-5.3%
Manufacturing	-1.2%	-1.8%	1.5%	1.1%	-8.9%	-11.2%	4.4%	2.2%	1.6%	1.4%
Electricity	-1.4%	-1.8%	0.6%	1.5%	-3.5%	-8.3%	2.1%	-0.7%	0.1%	0.3%
Construction	0.4%	-0.1%	-1.7%	-1.4%	-11.6%	-27.0%	4.5%	1.0%	2.0%	2.2%
Trade	0.5%	0.8%	-0.6%	0.0%	-8.4%	-12.9%	2.4%	0.9%	1.2%	1.1%
Transport	0.3%	0.2%	0.2%	0.4%	-9.1%	-10.4%	2.0%	0.7%	1.5%	1.7%
Finance	-0.8%	1.2%	-0.3%	0.9%	-5.5%	-3.3%	0.7%	2.3%	2.1%	2.6%
Community services	-0.4%	0.7%	0.8%	1.1%	-6.8%	-6.9%	-1.4%	0.5%	-0.2%	0.6%
Total Industries	-1.1%	-1.7%	-1.8%	-8.1%	-8.3%	-14.4%	7.4%	-1.5%	-1.6%	-1.3%

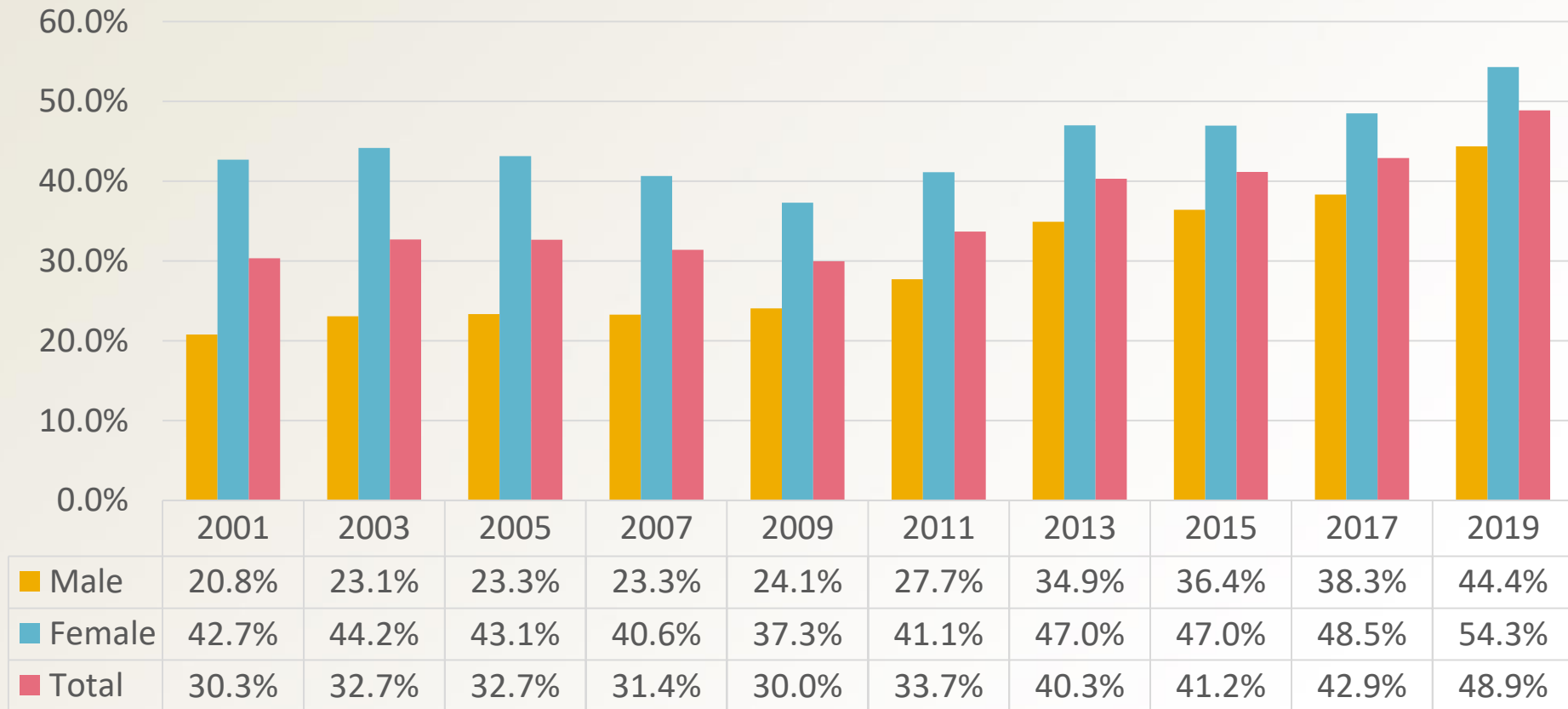
Source: IHS Markit, Regional eXplorer version 1991



treasury
Department of
Treasury
FREE STATE PROVINCE

www.fs.gov.za

Total unemployment rates



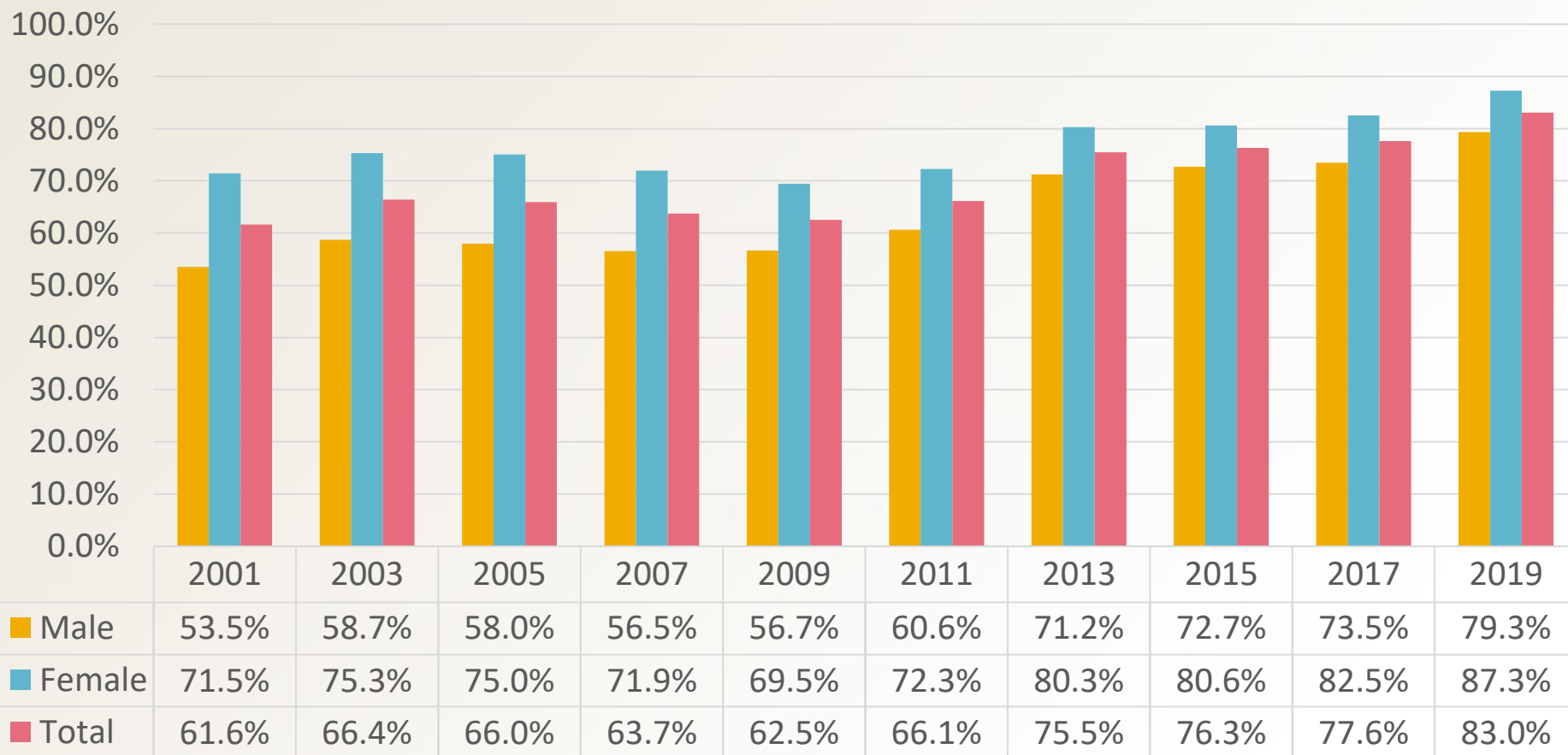
Source: IHS Markit, Regional eXplorer version 1991



treasury
Department of
Treasury
FREE STATE PROVINCE

www.fs.gov.za

Youth unemployment rates (15 – 24 years)



Source: IHS Markit, Regional eXplorer version 1991



treasury
Department of
Treasury
FREE STATE PROVINCE

www.fs.gov.za

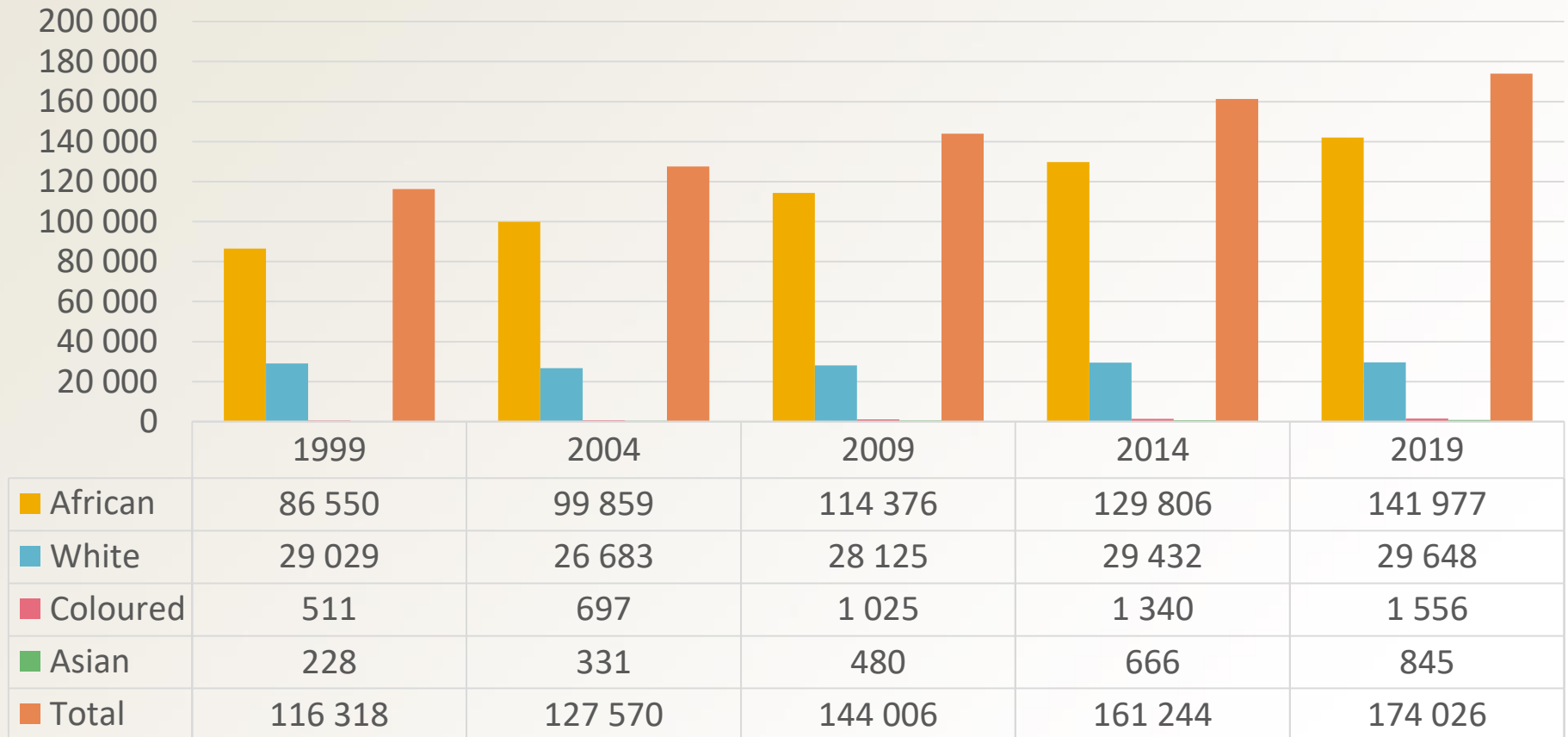
Metsimaholo Local Municipality



treasury
Department of
Treasury
FREE STATE PROVINCE

www.fs.gov.za

Metsimaholo population



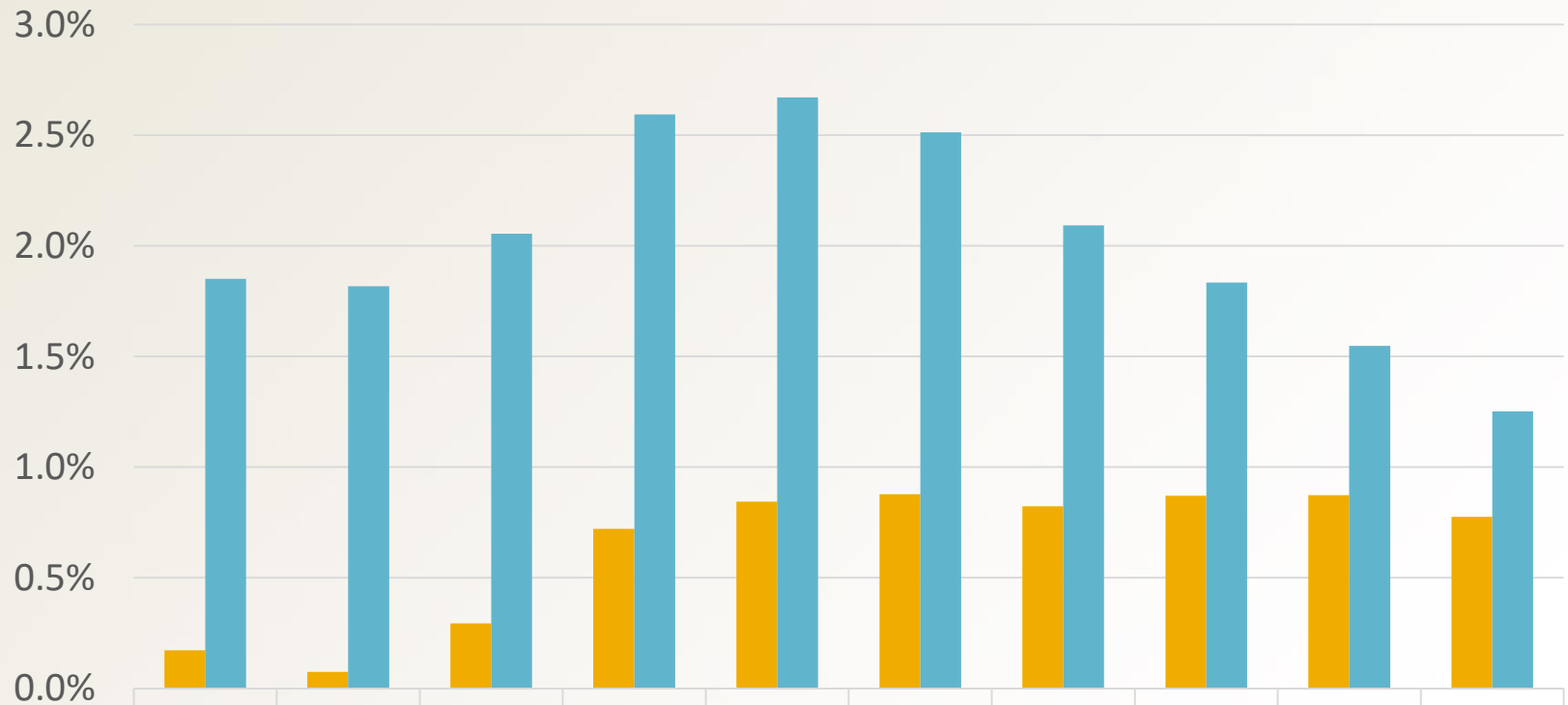
Source: IHS Markit, Regional eXplorer version 1991



treasury
Department of
Treasury
FREE STATE PROVINCE

www.fs.gov.za

Population growth rates



■ Fezile Dabi	0.2%	0.1%	0.3%	0.7%	0.8%	0.9%	0.8%	0.9%	0.9%	0.8%
■ Metsimaholo	1.9%	1.8%	2.1%	2.6%	2.7%	2.5%	2.1%	1.8%	1.5%	1.3%

Source: IHS Markit, Regional eXplorer version 1991

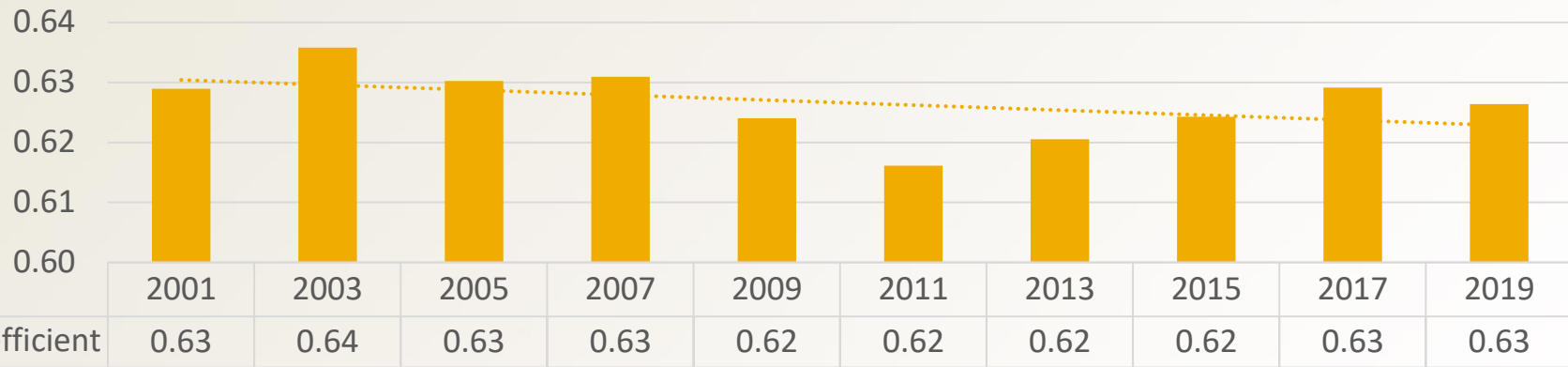


treasury
Department of
Treasury
FREE STATE PROVINCE

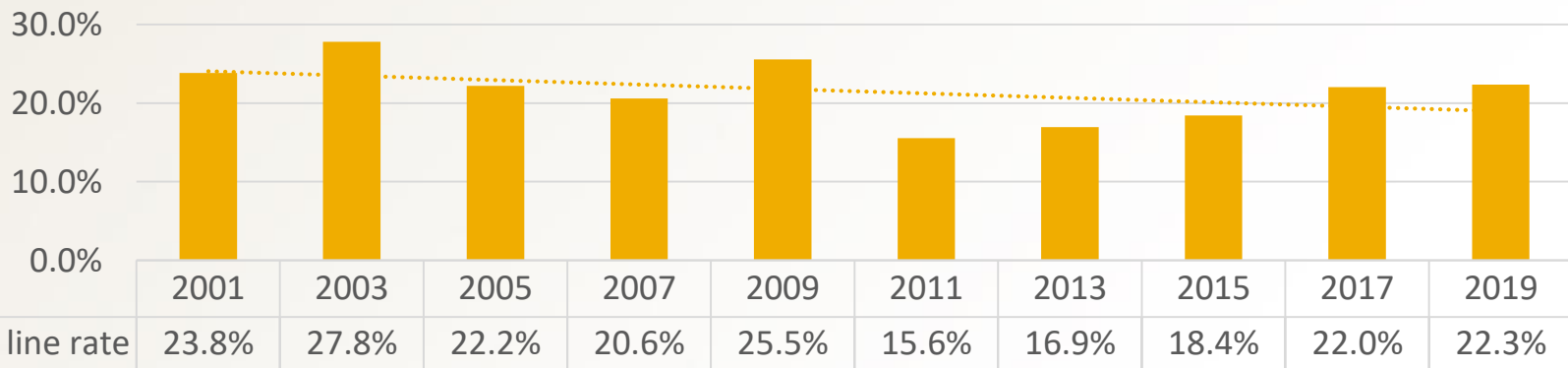
www.fs.gov.za

Development indicators

Gini coefficient



Food poverty line rate



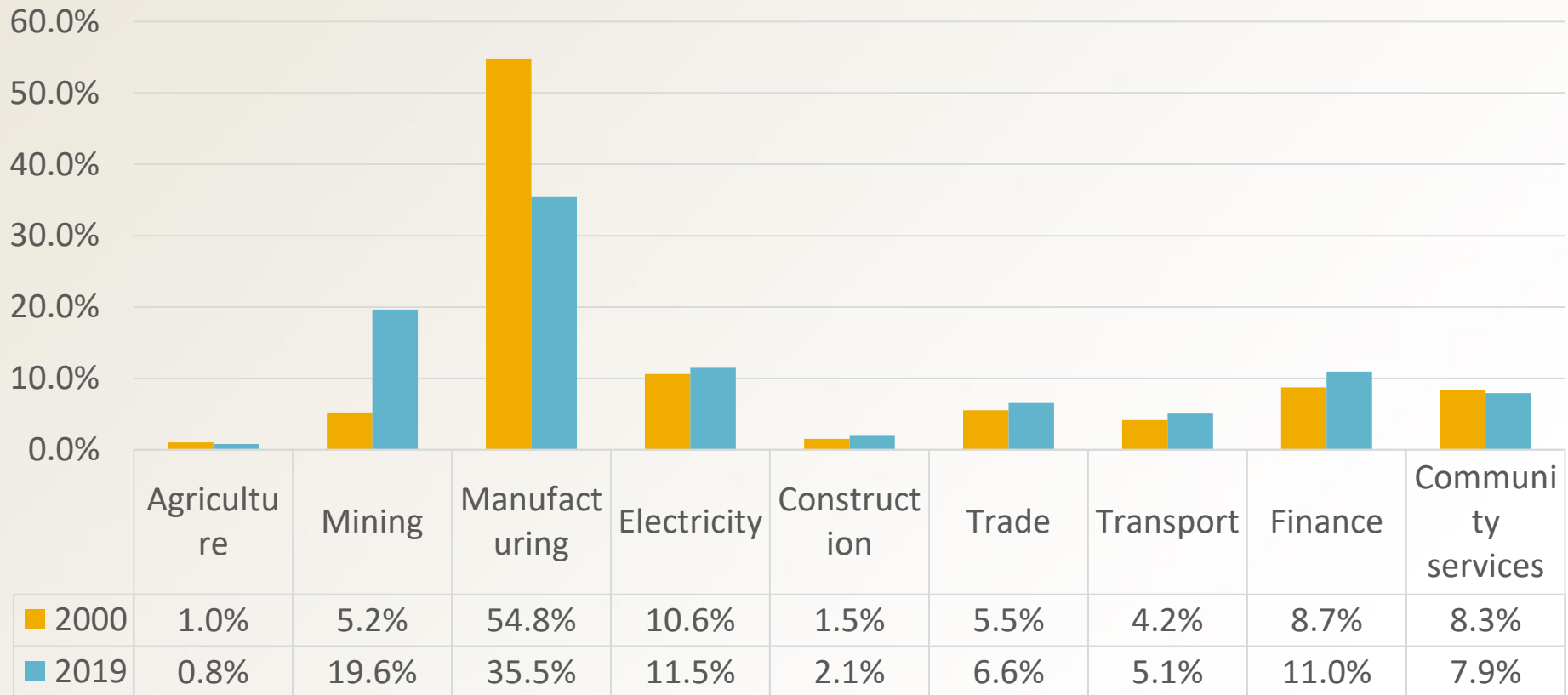
Source: IHS Markit, Regional eXplorer version 1991



treasury
Department of
Treasury
FREE STATE PROVINCE

www.fs.gov.za

GDP contribution per sector



Source: IHS Markit, Regional eXplorer version 1991

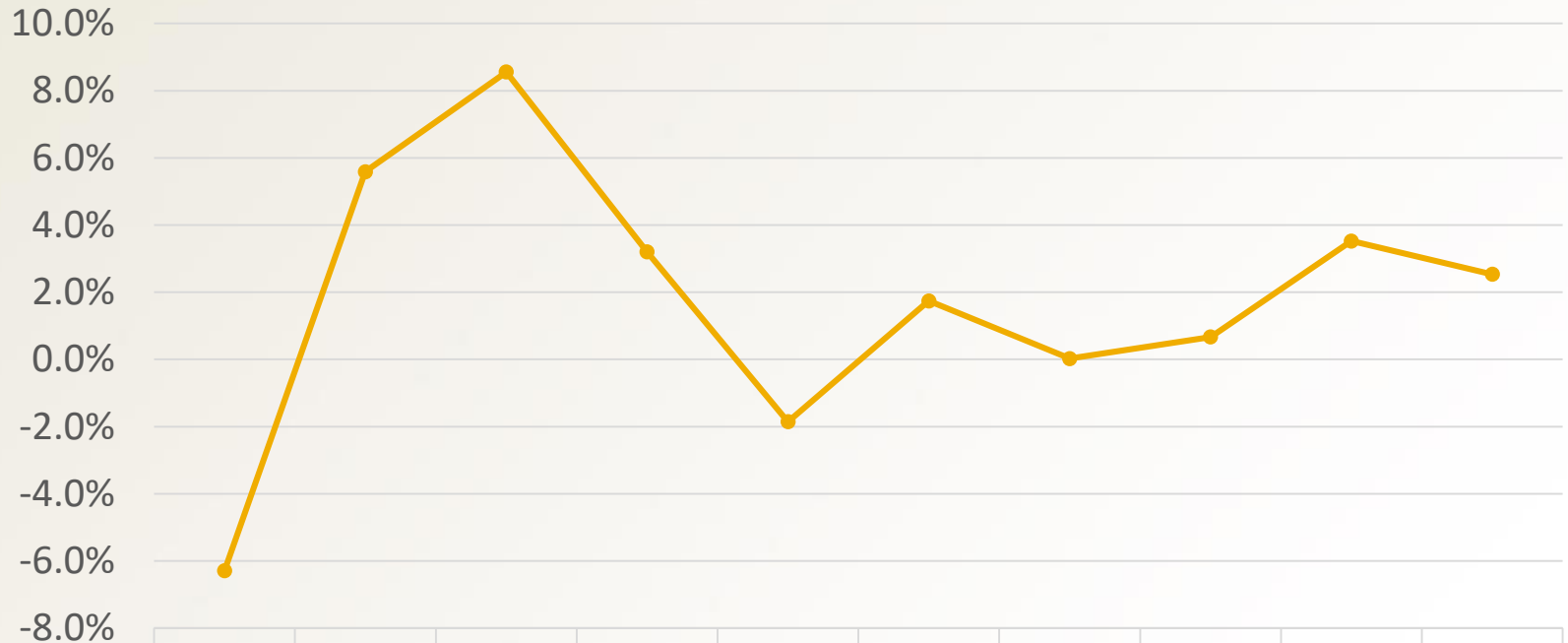


treasury
Department of
Treasury
FREE STATE PROVINCE

www.fs.gov.za

GDP growth rate

Metsimaholo



	2001	2003	2005	2007	2009	2011	2013	2015	2017	2019
—●— Metsimaholo	-6.3%	5.6%	8.6%	3.2%	-1.9%	1.7%	0.0%	0.7%	3.5%	2.5%

Source: IHS Markit, Regional eXplorer version 1991



treasury
Department of
Treasury
FREE STATE PROVINCE

www.fs.gov.za

Economic Outlook

	2015	2016	2017	2018	2019	2020	2021	2022	2023	2024
Agriculture	-22.8%	-17.9%	31.2%	0.1%	-7.1%	6.6%	-0.9%	1.4%	2.8%	2.4%
Mining	-3.1%	9.4%	18.5%	9.7%	5.2%	-2.7%	0.4%	-4.6%	-4.7%	-4.3%
Manufacturing	0.3%	2.2%	-1.1%	-0.2%	-1.0%	-7.9%	4.0%	2.7%	1.9%	1.6%
Electricity	-0.4%	-2.8%	0.8%	-1.2%	-1.3%	-8.0%	2.4%	-0.5%	0.4%	0.4%
Construction	3.4%	1.8%	-0.4%	-0.2%	-2.7%	-26.1%	5.2%	1.6%	2.4%	2.5%
Trade	3.1%	2.2%	0.8%	1.1%	0.5%	-13.0%	3.0%	1.3%	1.5%	1.3%
Transport	2.4%	1.2%	1.6%	1.3%	-0.3%	-10.6%	2.8%	1.2%	2.0%	2.0%
Finance	2.4%	3.1%	2.7%	3.0%	2.6%	-1.6%	1.4%	3.0%	2.4%	2.6%
Community services	2.6%	2.4%	1.9%	2.2%	2.3%	-6.4%	-0.6%	1.2%	0.2%	0.9%
Total Industries	0.2%	3.0%	3.7%	2.5%	1.1%	-6.7%	2.2%	0.4%	0.2%	0.3%

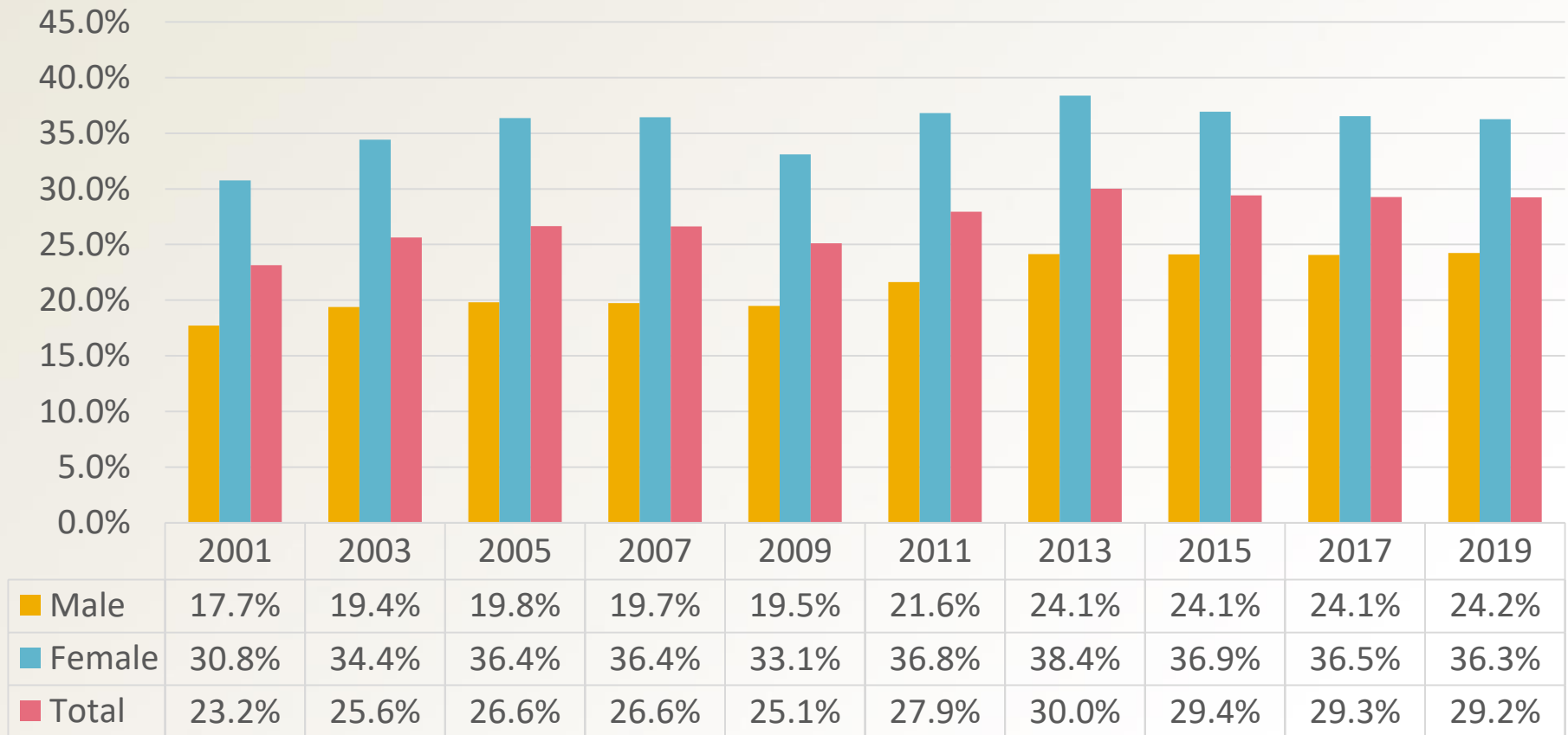
Source: IHS Markit, Regional eXplorer version 1991



treasury
Department of
Treasury
FREE STATE PROVINCE

www.fs.gov.za

Total unemployment rates



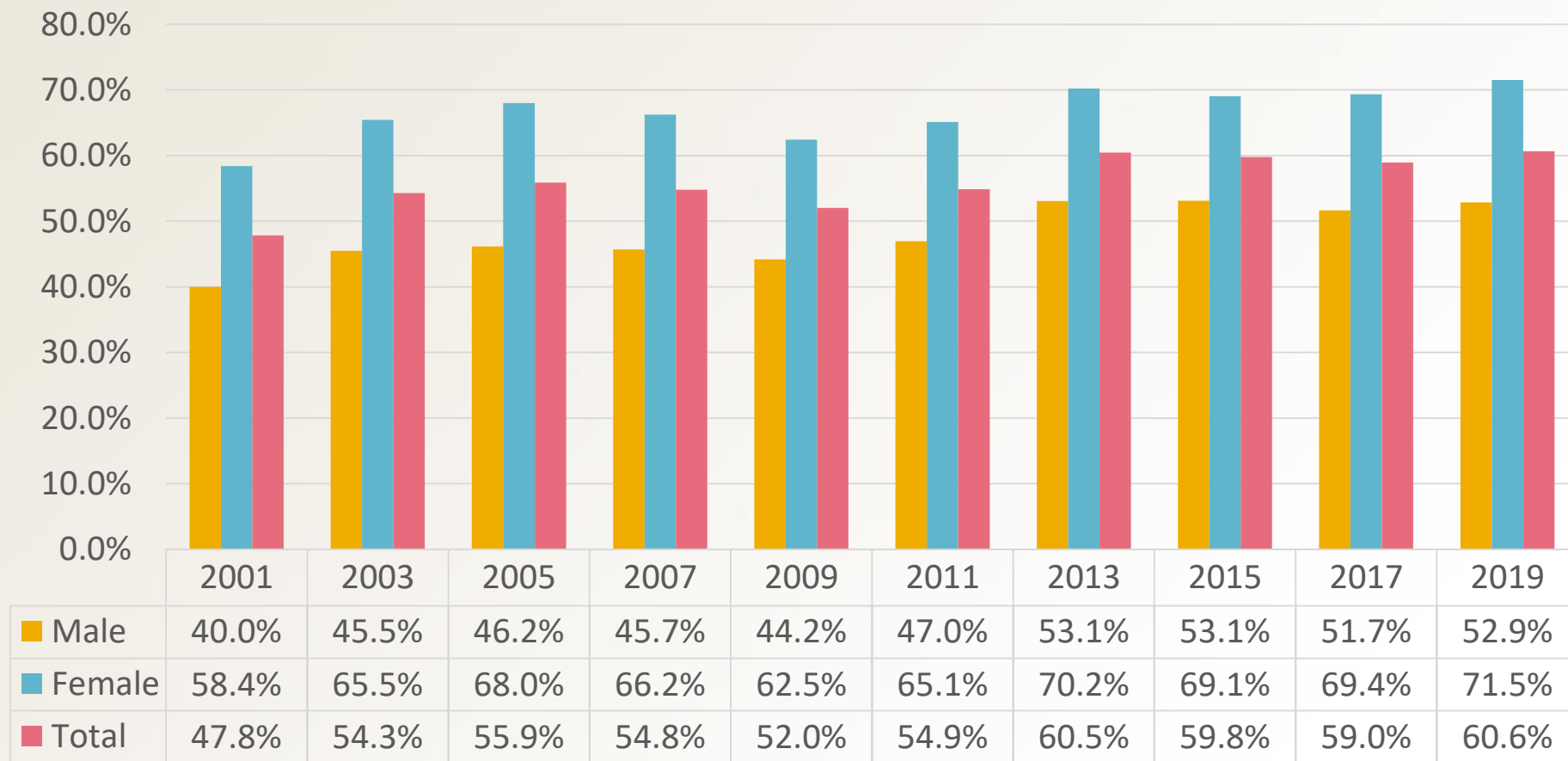
Source: IHS Markit, Regional eXplorer version 1991



treasury
Department of
Treasury
FREE STATE PROVINCE

www.fs.gov.za

Youth unemployment rates (15 – 24 years)



Source: IHS Markit, Regional eXplorer version 1991



treasury
Department of
Treasury
FREE STATE PROVINCE

www.fs.gov.za



treasury
Department of
Treasury
FREE STATE PROVINCE

www.fs.gov.za