



# Overview of Programme offerings of South African Legislative Sector

- A Collaboration of Parliament and Provincial Legislatures -

---

Presented by: Ms Sandisiwe Schalk  
Executive Director  
Legislative Sector Support(LSS)

# Building Stronger Legislatures Through Collaboration



## Who is the SA Legislative Sector?

- \* Collaboration of Parliament & Provincial Legislatures
- \* Under the guidance & leadership of the Speakers' Forum
- \* Technical support – Secretaries Association of Legislatures of South Africa (SALSA)
- \* Coordination and management mechanism, the Legislative Sector Support (LSS)

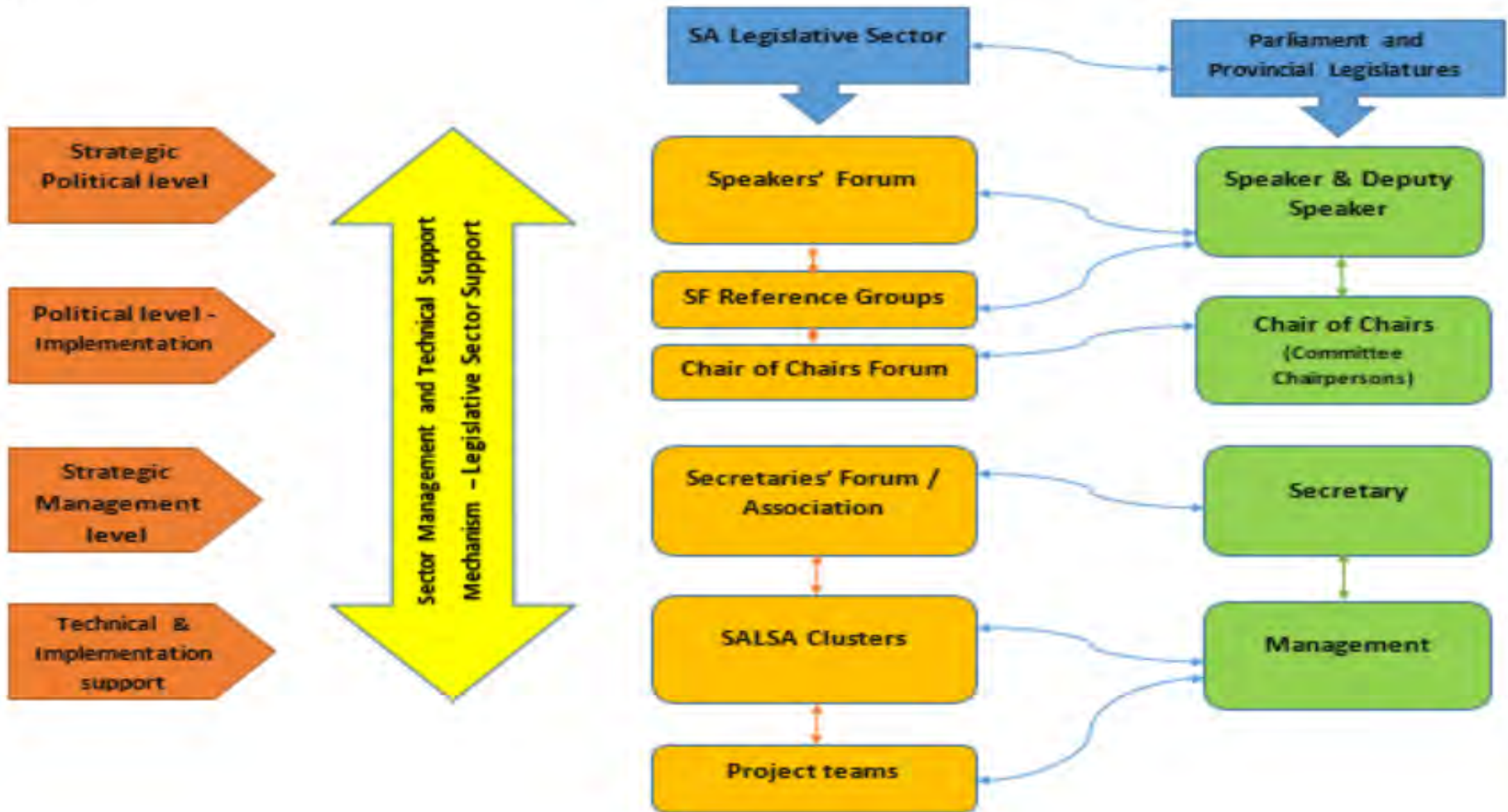


## How is the Sector regulated?

- \*Through a Memorandum of Understanding
- \*Draft Legislative Sector Bill (drafted - 5<sup>th</sup> Parliament) & to be passed in the 6<sup>th</sup> Term
- \*Both regulatory mechanisms consider Section 40 of the Constitution (independent but interrelated and interdependent)



# Governance Model of SALS



# The Benefits of Collaboration



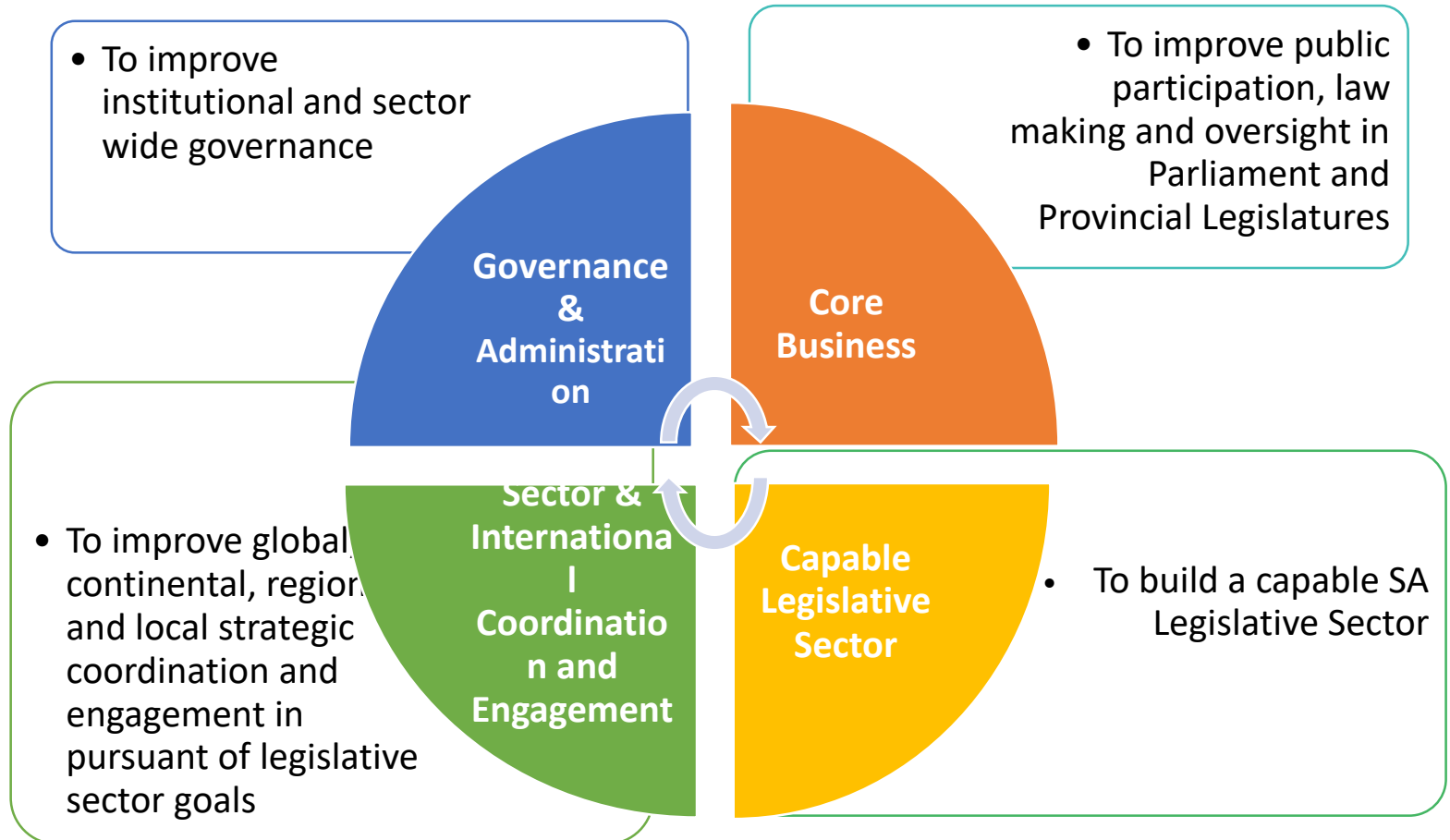
- **Overall aim:** Strengthen the Legislative arm of government through Cooperative Governance
- **Purpose:** Develop all Legislatures to enhance democracy & speak with one voice
- Recognition of the need to **collaborate on matters of common interest**



*Whilst mindful of independence and unique environment of institutions*

# Legislative Sector Programmes

## Sector Strategic Goals



# Achievements

---

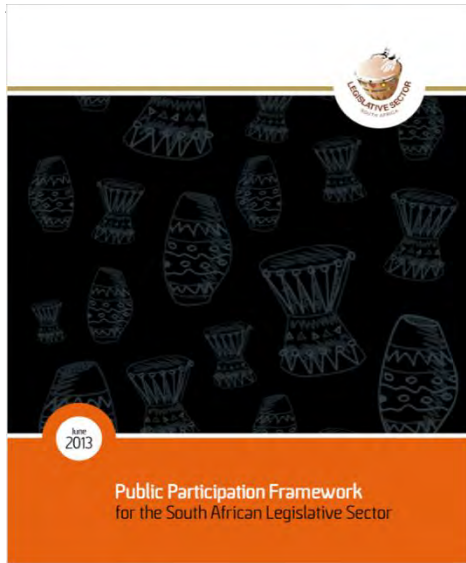


- ❑ Common programmes (Sector Frameworks – SOM, PP, KM, Comms etc)
- ❑ Capacity Development Programmes for members and staff
- ❑ Sector Strategic Framework in the 5<sup>th</sup> Term
- ❑ Determination of a Sector Budget Process
- ❑ Common Induction approach and modules developed
- ❑ Common Sector Policy Priorities to be determined at the beginning of the 6<sup>th</sup> Term

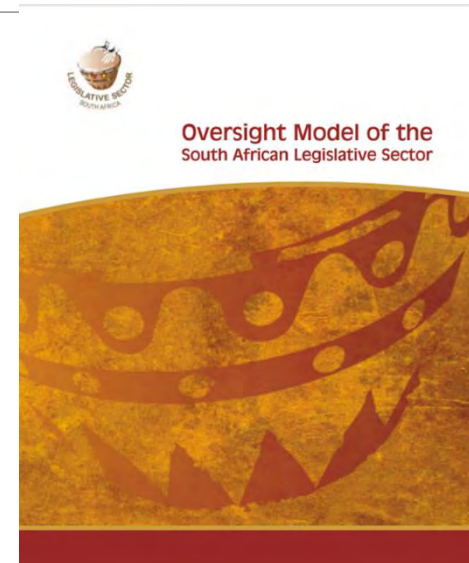
# Sector Common Norms & Standards



Develop common Sector norms and standards based on similar mandates



- Developed Public Participation (PP) Framework to ensure a common practices
- Regulate PP in the Sector
- Joint implementation of Sector Parliaments & relevant commemorations



- The development & implementation of the Sector Oversight Model (SOM)
- The review of SOM implementation
- Integration of SOM with tracking tool for the implementation of the NDP

*Whilst mindful of independence and unique environment of institutions*





# Capacity Building of Members

---

- A comprehensive Members' Capacity Building Programme (from 2009 - 2019)
- Accredited programme implemented with Institutions of Higher Learning
- 30-40 % customised by the Sector
- Implementation commenced in the 4<sup>th</sup> Parliament
- Members enter at different levels of education
- Exit at Post Graduate Level
- MPs/MPLs capacitated in core responsibilities & also attain qualifications



# Capacity Building of Members

---

## Programme & Entry Requirements

- Members are profiled to determine their entry levels
- Profiling is done based:
  - ✓ on political & professional organisational experience
  - ✓ employment history
  - ✓ educational qualifications and
  - ✓ training needs and aspirations
- Member profiles used to determine their needs for assistance to ensure entry in the programmes.



## Sector Capacity Building for Members

- a) Graduate Certificate in Leadership
- b) Post Graduate Diploma in Governance and Public Leadership
- c) Post Graduate Diploma in Public Policy and African Studies
- d) Masters Programmes

# Capacity Building Plans (2019-2024)



- ❑ (2019/20) Comprehensive Induction Programme – more detailed induction in core areas of the SA Legislative Sector
- ❑ (2020/21) Graduate Certificate in Governance and Leadership – WITS & Continuing Education Programmes – UJ
- ❑ (2021 to 2023) Postgraduate Diploma in Management in Governance & Leadership-WITS & PGDip in Public Affairs and African Studies – UJ
- ❑ (2023/24) Masters Programme (WITS & UJ)



## Comprehensive Induction Programme for Members

Module 1: Rules, Practice and Procedure in the House

Module 3: Committee Procedures, Practice and Systems

Module 5: Public Participation

Module 2: The Legislative Process

Module 4: Oversight & Accountability

Module 6: International Relations & Protocol

# Capacity Building - 2014 – 2024

---



- Expansion of the scope of capacity building programmes-focusing on committee specific skills.
- Shifting of focus, and dedicate more resources for the implementation of training programmes for officials.
- Invest in technology and explore the utilization of knowledge management as an enabler & support of the 4th Industrial Revolution plans.
- Priority given to implementation of plans for the establishment of parliamentary institute

# Looking forward

---



- ❑ Institutional Induction (Phase 2 ) based on the modules
- ❑ Detailed Induction on Core Business (Institutional -Phase 2)
- ❑ Induction of House Chairpersons & Chairs and Chairs on Sector instruments (possibly a Summit in July 2020 still to be considered by the Speakers Forum)
- ❑ Launch of the South African Legislative Sector Parliamentary Institute



---

**Thank You!!**

