



NATIONAL COUNCIL OF PROVINCES
Women's Charter for Accelerated Development,
Report Back Session.
11 November 2022
Kaizer Sebothelo Stadium, Botshabelo

PRESENTATION BY:
Cllr. Mxolisi Siyonzana
Executive Mayor

Content

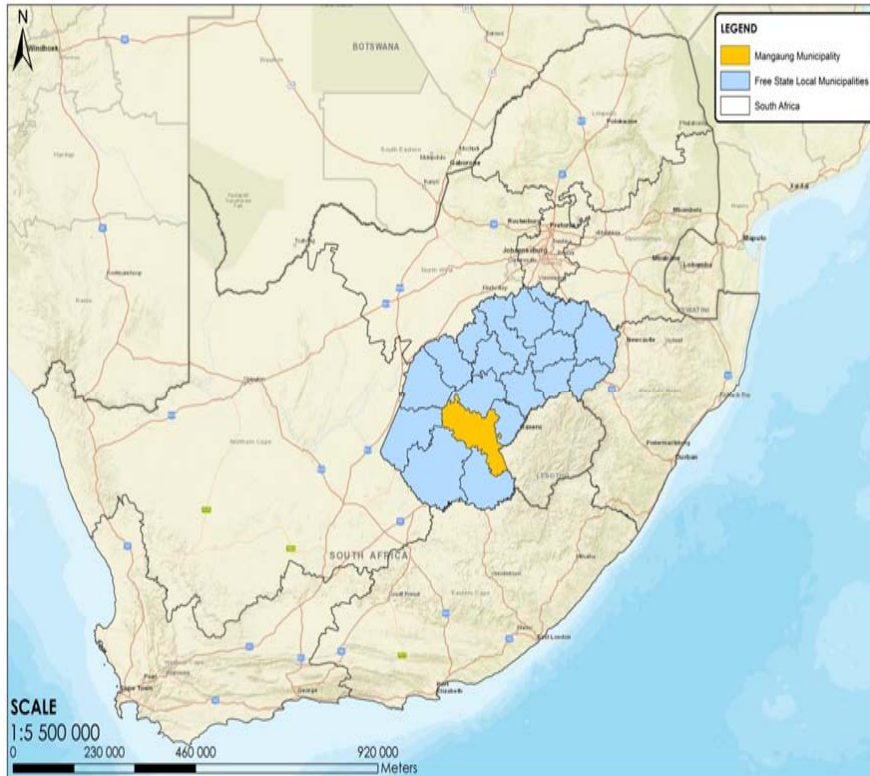
- 1 Introduction: Mangaung
- 2 Mangaung Gender Machinery
- 3 Developing Gender Engendered Policies
- 4 Local Economic Development (Women Economic Empowerment)
- 5 Gendered Provision of Services
- 6 Gender Based Violence and Femicide Response Programme

Introduction : Mangaung



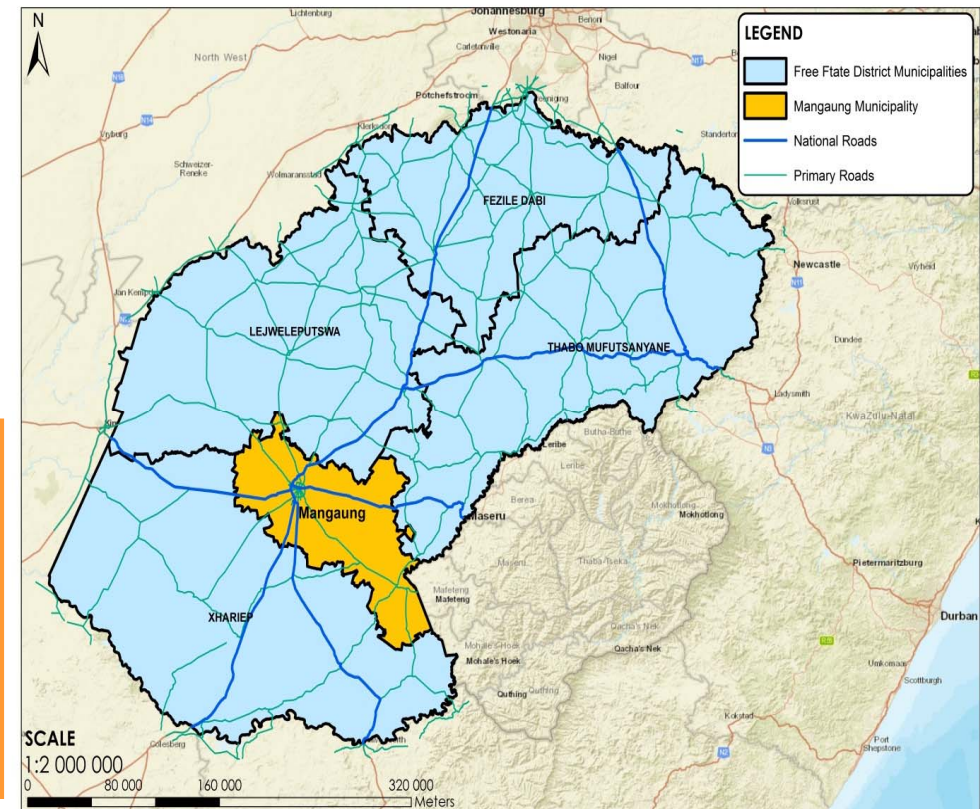
1. Introduction and Background

Spatial Location of Mangaung Metro (National and Provincial Context)



- Mangaung is centrally located within SA
- Most National Routes traverse the Metro (N1, N8, N6)
- The only Metropolitan municipality in the Free State Province
- “Judicial Capital” of the country

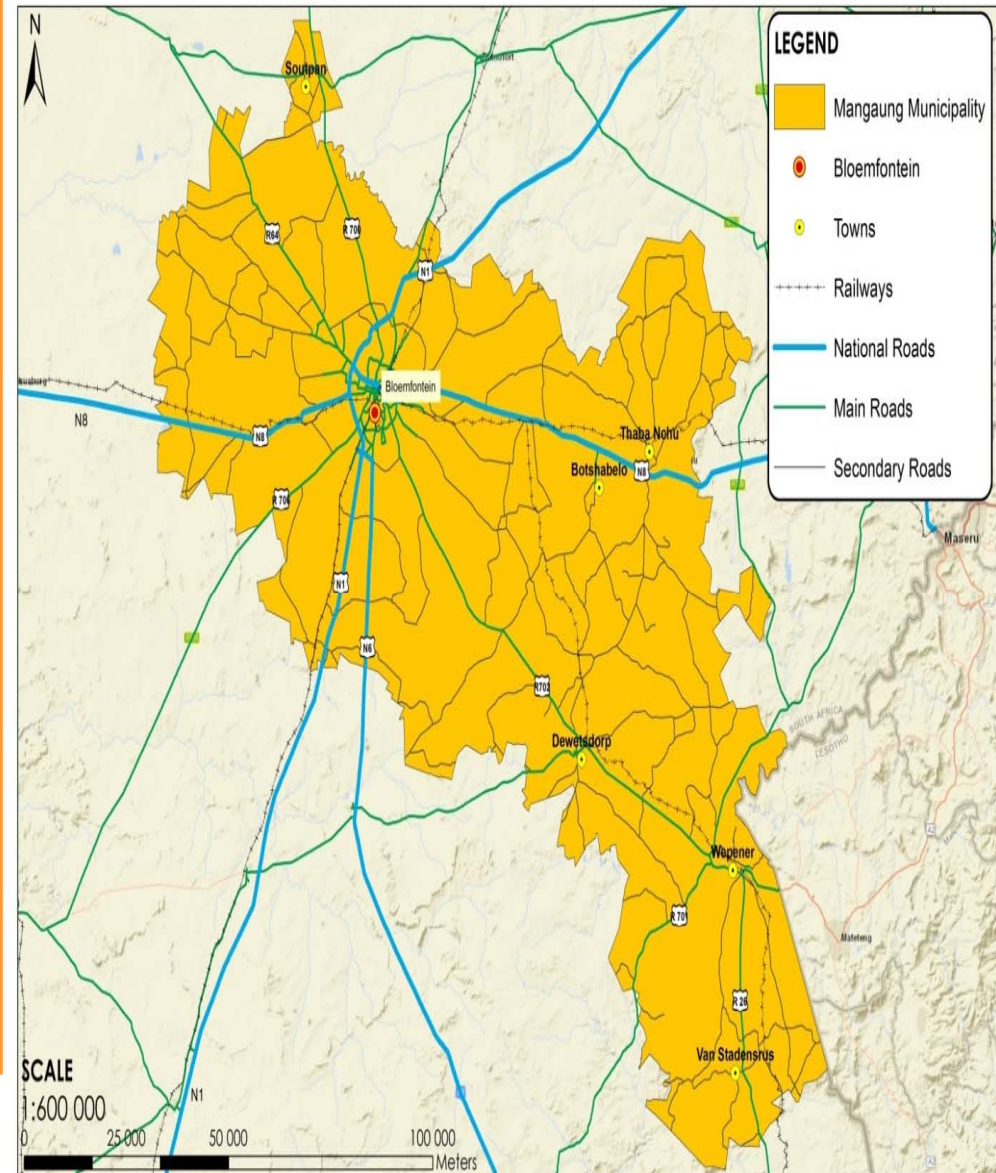
- One of the five Regional Spaces within the FS Province
- Bordered by Xhariep, Lejweleputswa and Thabo Mofutsanyana Districts
- Share national border with Lesotho
- Provincial Capital City



1. Introduction and Background

Spatial Location of Mangaung Metro (Local context)

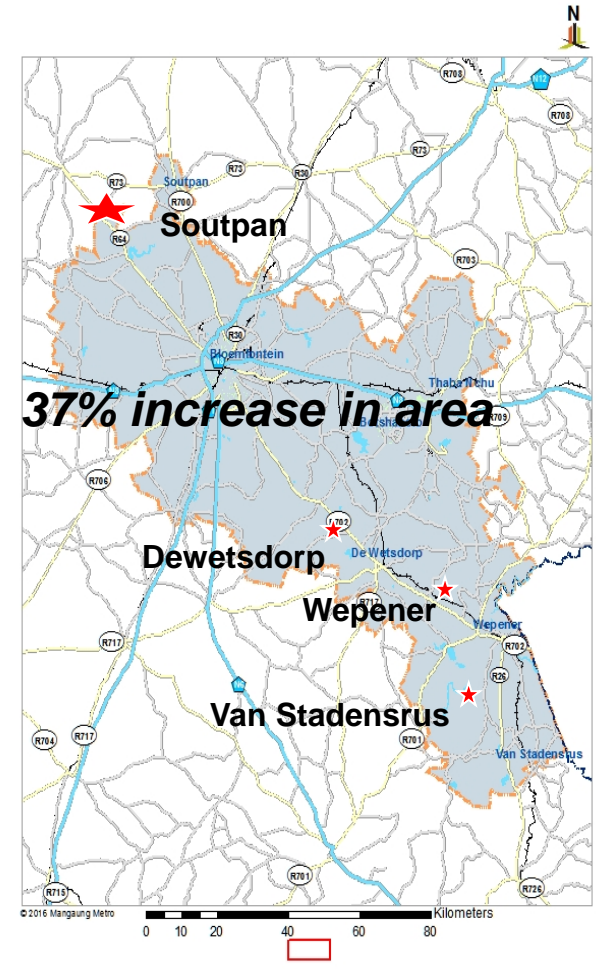
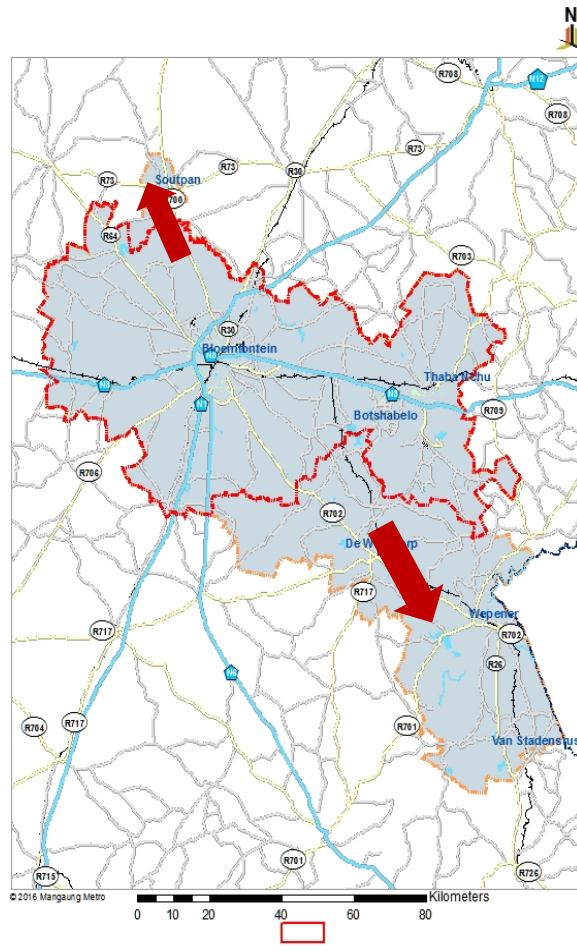
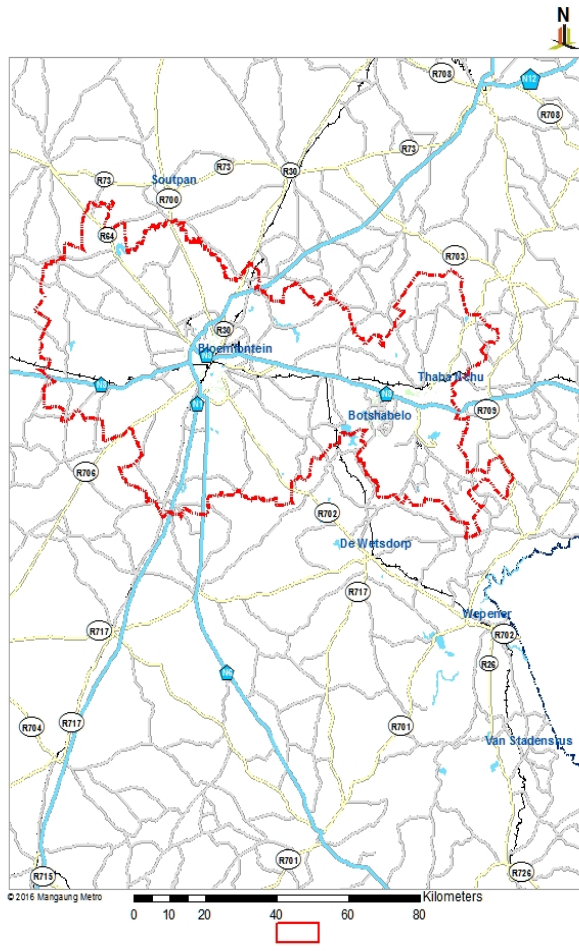
- Mangaung means 'place of cheetahs'.
- Established in 2000 as category B local municipality and elevated in April 2011 as category A metro municipality.
- Seven geographic towns namely : (Bloemfontein/Mangaung, Botshabelo, Thaba Nchu, Dewetsdorp, Wepener, Van Stadensrus and Soutpan).
- Bloemfontein administrative capital of the Province and strategic economic and trade hub.
- Largest metropolitan municipality by land size (9,886 km²) but smallest population of all metros 771 731 people.
- Comprises of 51 wards.



Pre 2016 : Area: 6284 square kilometers

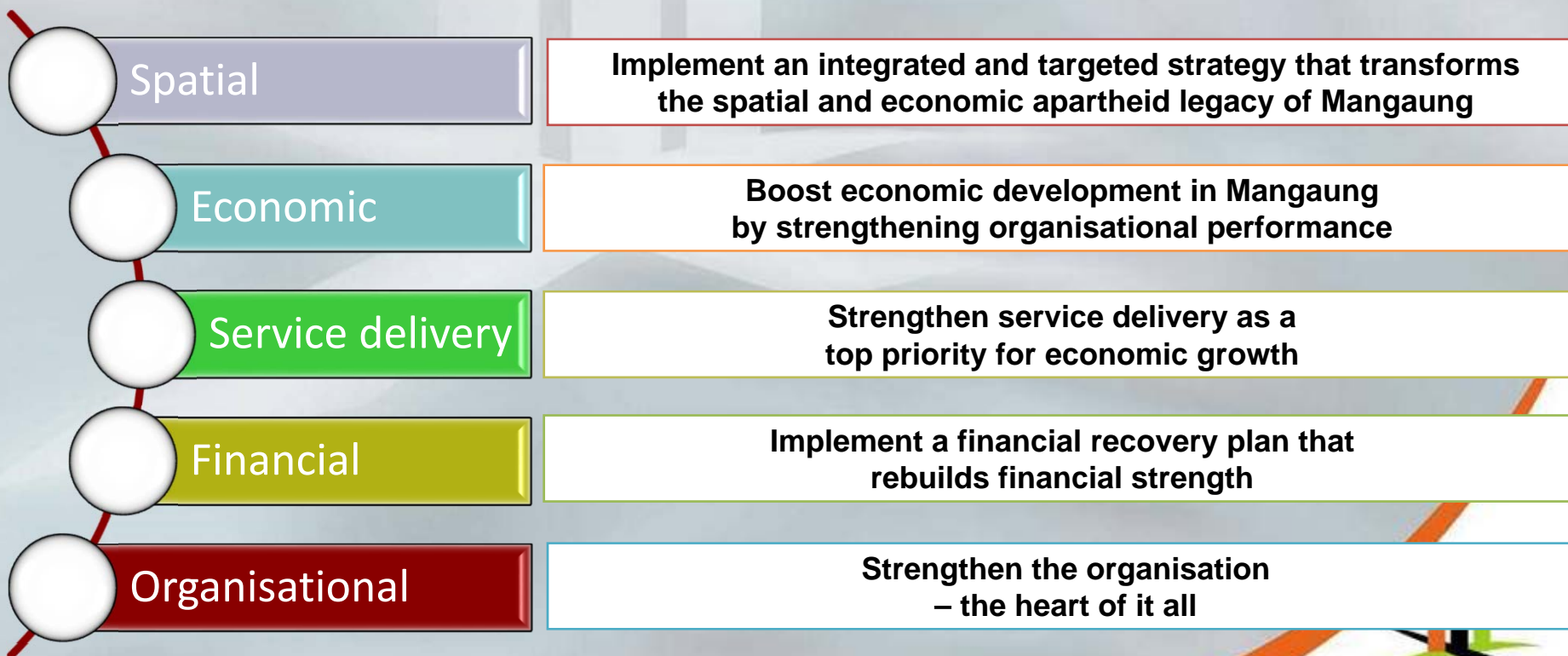
Aug 2016 Re-demarcation

Post Aug 2016 Area: 9899 square kilometers



Development Vision 2030

'... globally safe and attractive to live, work and invest in'



Mangaung Gender Machinery

Gender Machinery

- Municipal Troika – The Deputy Executive Mayor and Speaker are women.
- Municipality Council has 101 Councillors – 39 are women
Municipality has Section 80 Committees – Six (06) are chaired by women
- Municipality has five (05) Section 79 Council Committees: two are chaired by women.
- Special Programmes Unit located in the Office of the Executive Mayor.
- Employment Equity Unit located within the administrative department of Corporate Service.

Developing Gender Engendered Policies

Progress made in developing engendered policies

- Learnership - 37 women completed learnership qualification between NQF Level 4 to 6
- Employee Study Assistant Scheme - 65 female qualified
- Internship – 41 females benefited

Progress made in developing engendered policies ...

- HR Policies in place:
 - Employment Equity Policy
 - Skills Development Policy
 - Occupational Health and Safety Policy on Personal Protective Equipment
 - Workplace Discrimination and Sexual Harassment Policy
 - Internship and Work Integrated Learning
 - HIV AIDS, STI and TB Policy
 - Disability Policy
 - Career Management Policy
 - HM&D strategy
 - Secession planning policy

Local Economic Development (Women Economic Empowerment)

Local Economic Development (Women Economic Empowerment)

- 38 female SMMEs benefitted
- MMM didn't spend their budget according to SDBIP expectations due Covid 19
- Statistical data collection involving women's participation in informal trade is underway
- Economic Investment Summit is planned – hence this data collection and analysis

Gendered Provision of Services

Gendered Provision of Services

- MMM has 146 000 households
 - 69474 are indigent households
 - About 41 000 are women-headed households
- Access to free basic electricity
 - All active electricity meters – 195910
 - Residential female – 4295
 - Free Basic Electricity Female – 2371
 - Total Active Female - 6666

NB: This stats are as per the current of indigent resister –
However, the accuracy could be confirmed once Indigenet
Register has been updated accordingly

Gendered Provision of Services...

- **Titlle Deeds**
 - Transferred 2696
 - Issued 473
- **Water and sanitation**
 - 146 000 households
 - Botshabelo – 27000 households with PIT/VIP toilet
 - Thaba-Nchu – 10000 households with PIT/VIP toilet
 - Bloemfontein – 2000 households with PIT/VIP toilet
- **Budget provisions in the current SDBIP**

Gender Based Violence and Femicide Response Programme

Gender Based Violence and Femicide Response Programme

- Human Trafficking Awareness
- 16-Days of Activism
- Invention on Old Age
- World Aids Day
- Local Drug Action Campaign
-



THANK YOU

